

Idaho National Laboratory Infrastructure Evaluation for the HBURC Shipment

Steven J. Maheras
Miriam Juckett

Pacific Northwest National Laboratory
Southern States Energy Board (SSEB)
Joint Meeting of the Radioactive Materials
Transportation Committee
and the Transuranic Waste Transportation
Working Group
Kansas City, Missouri
December 9-10, 2025



U.S. DEPARTMENT
of **ENERGY**

Office of
Nuclear Energy

Spent Fuel and High-Level Waste Disposition

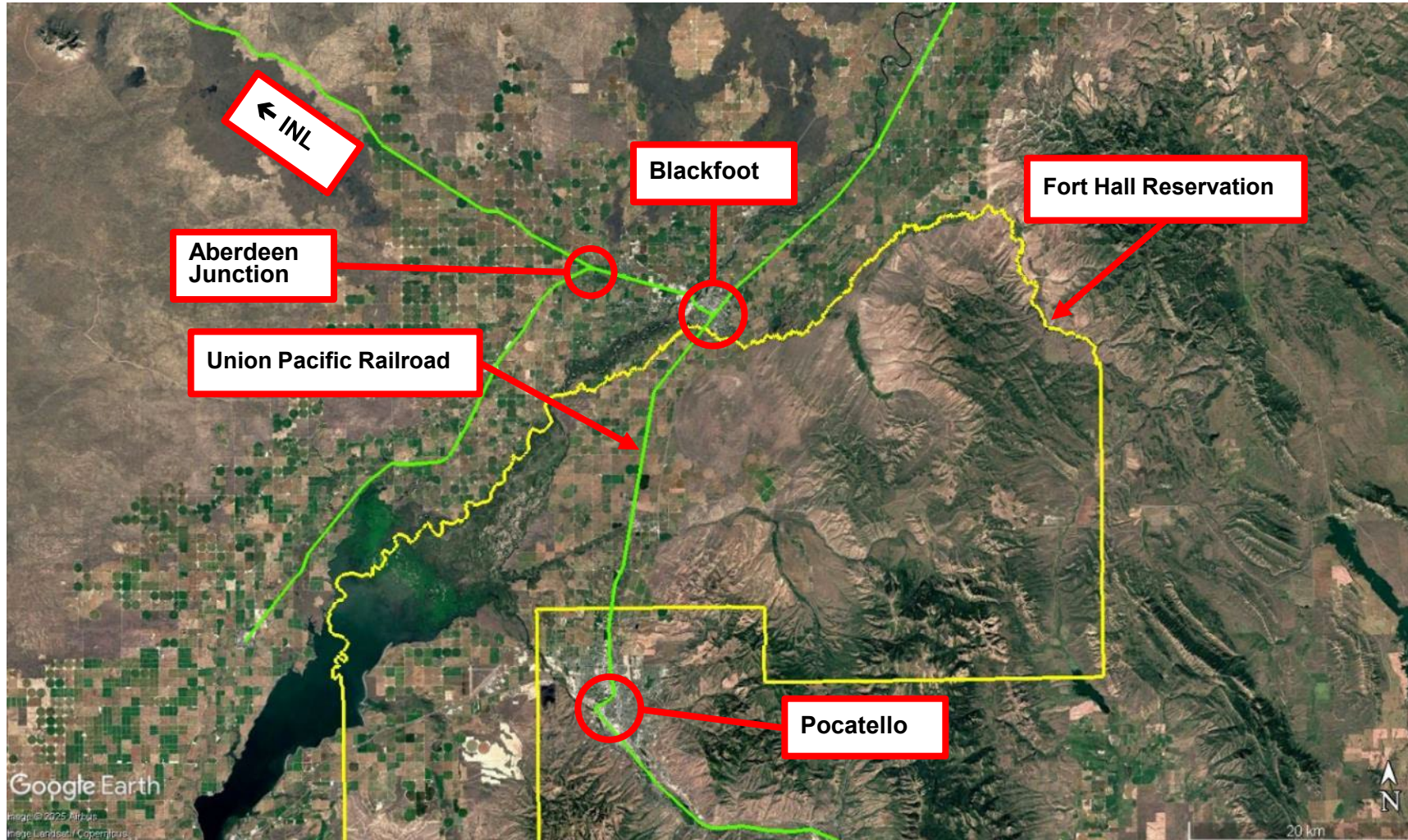
Idaho National Laboratory (INL) Infrastructure Evaluation

- INL infrastructure evaluation supports shipping of the TN-32B high burnup research cask (HBURC) from North Anna to INL as part of an ongoing DOE research project
- INL infrastructure evaluation occurred August 11-15, 2025
 - Day 1 – Rail Infrastructure
 - Day 2 – Idaho Nuclear Technology and Engineering Center
 - Day 3 – Local Leaders Meeting

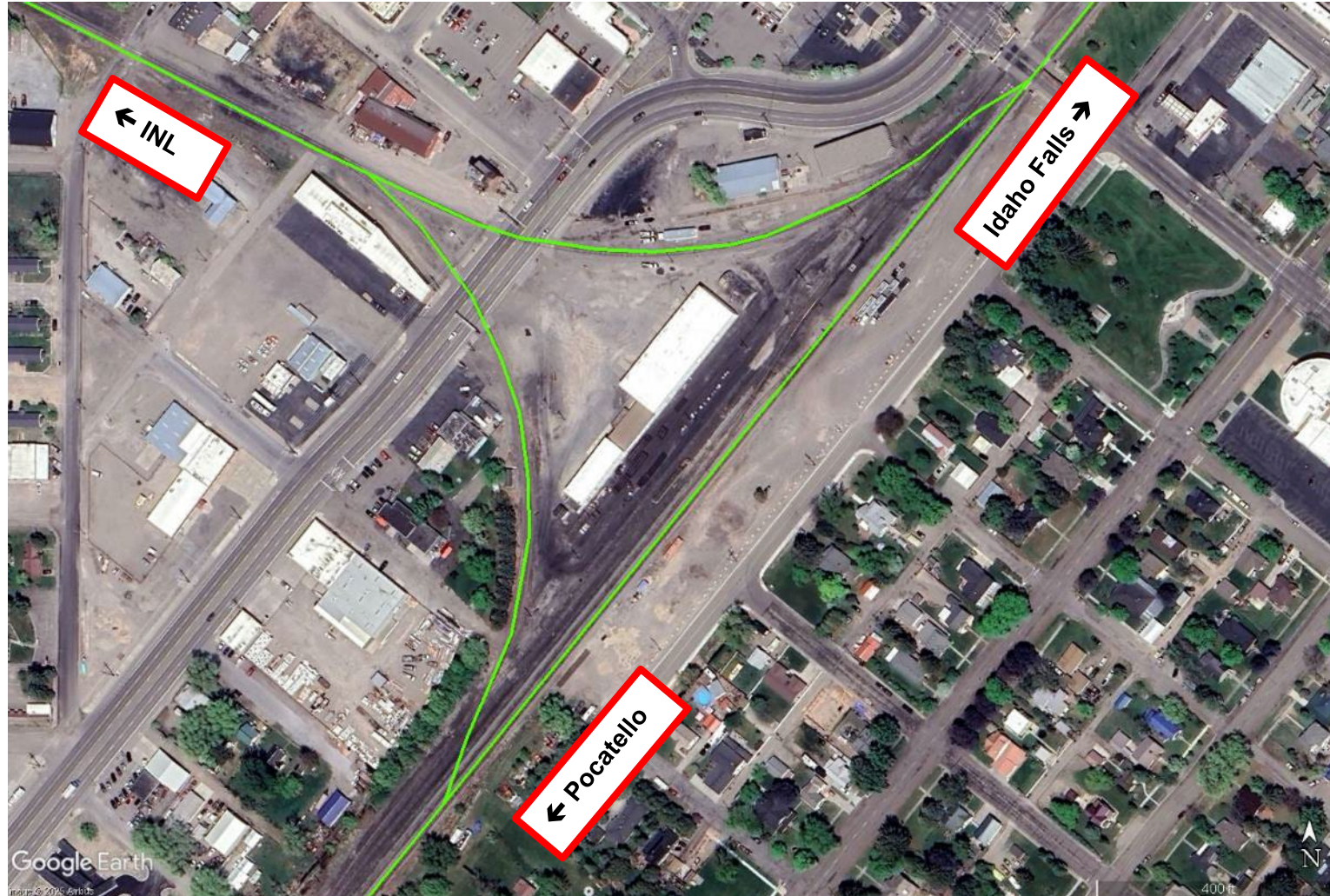
Where the HBURC Would Be Stored at INL – Idaho Nuclear Technology and Engineering Center (INTEC)



Regional Rail Infrastructure at INL



Aerial View of Blackfoot Railyard



Blackfoot Railyard



Collins Railroad Bridge



Aerial View of Aberdeen Junction



Aberdeen Junction

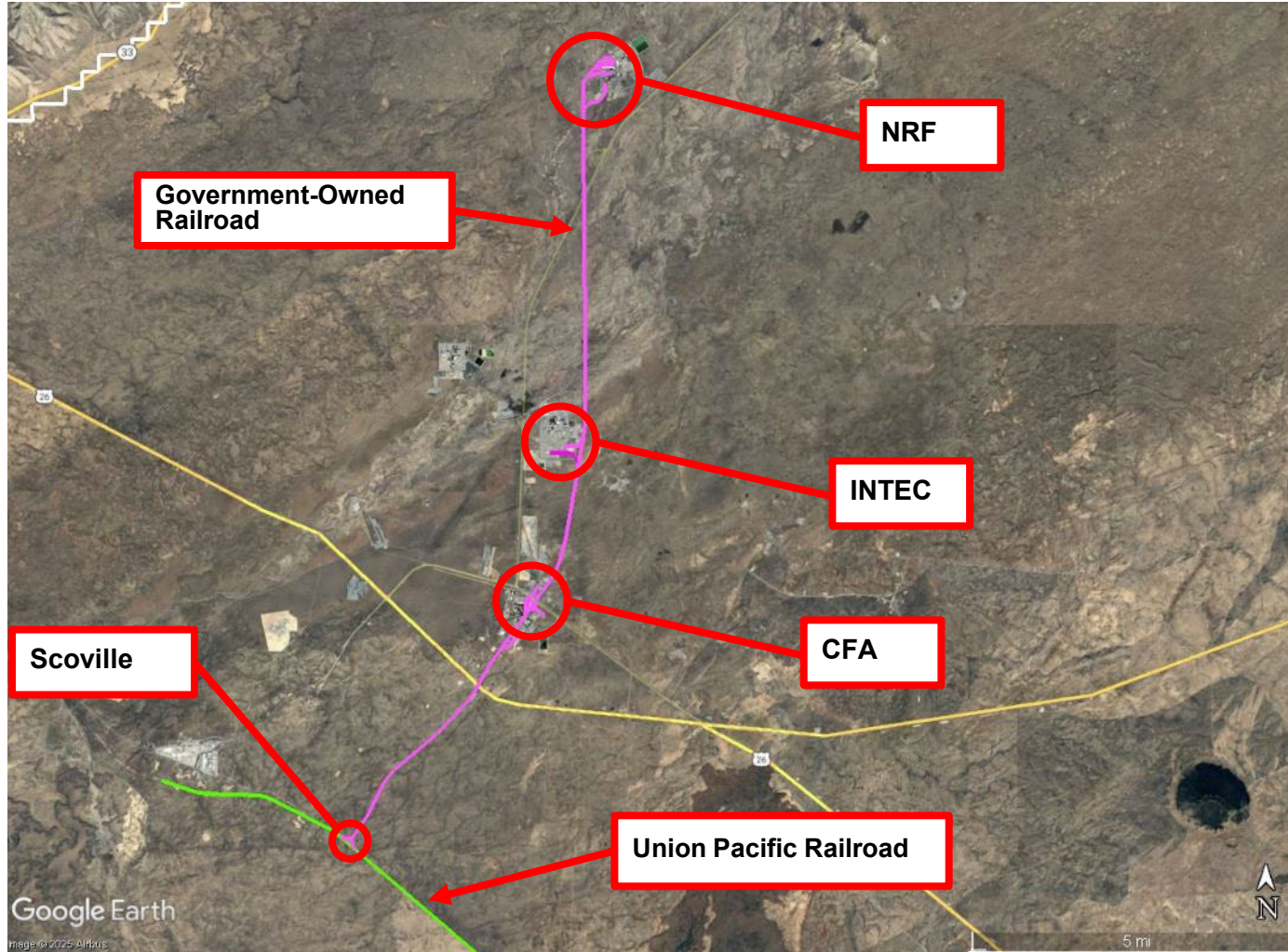


Canal Bridge Near Aberdeen Junction



Rail Infrastructure at INL

CFA: Central Facilities Area
INTEC: Idaho Nuclear Technical
and Engineering Center
NRF: Naval Reactors Facility



Interchange with Union Pacific (UP) at Scoville, Idaho



INL Maintenance Equipment at Work at Scoville



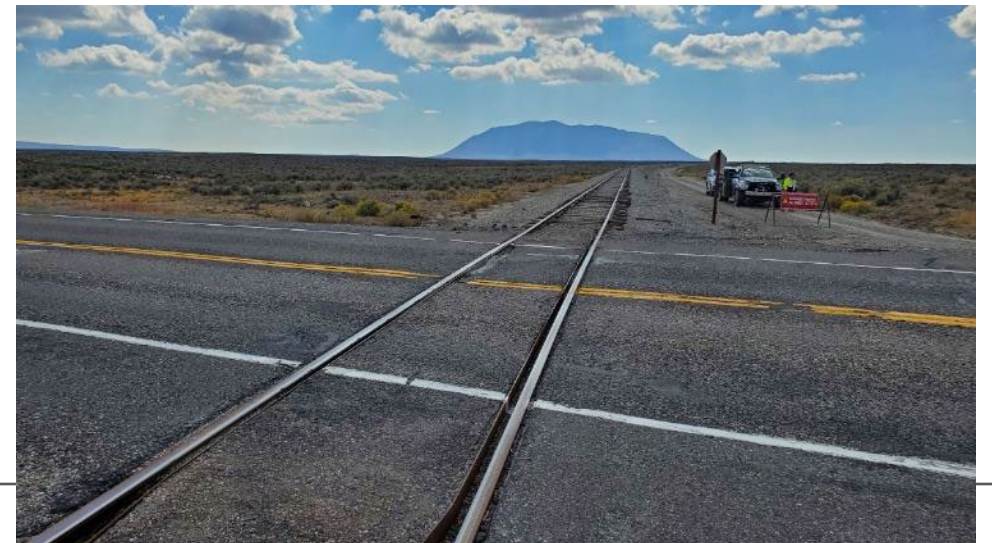
Rail Line from Scoville to Central Facilities Area (CFA)



Rail Line from Scoville to CFA (Further North)



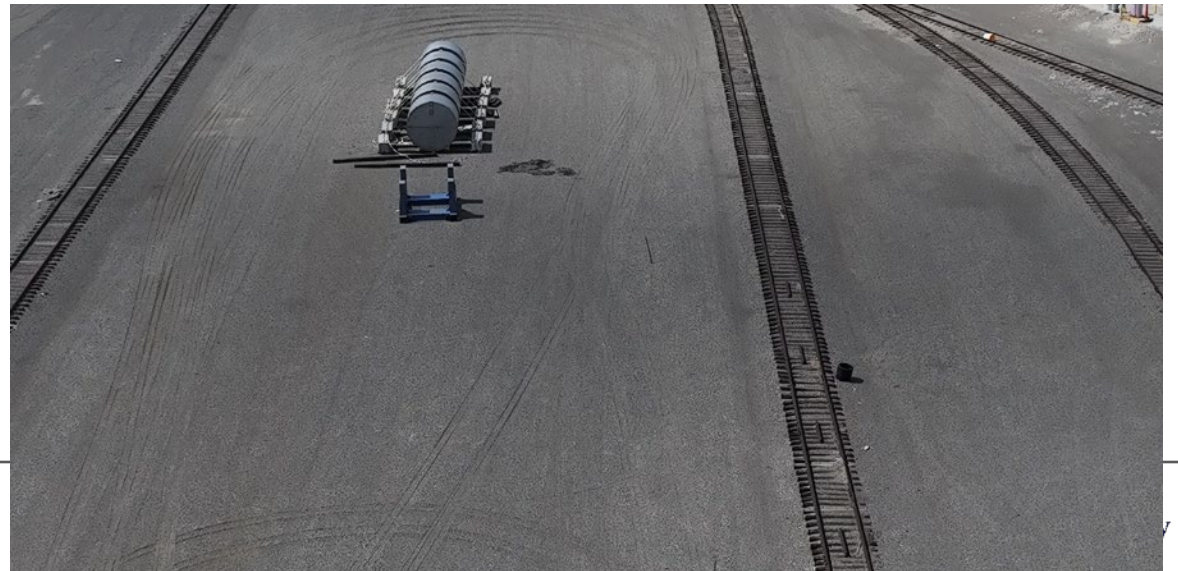
Approaching CFA (From South)



Potential Transload Area at CFA



Drone View of Potential Transload Area at CFA



Rail Line at CFA Potential Transload Area



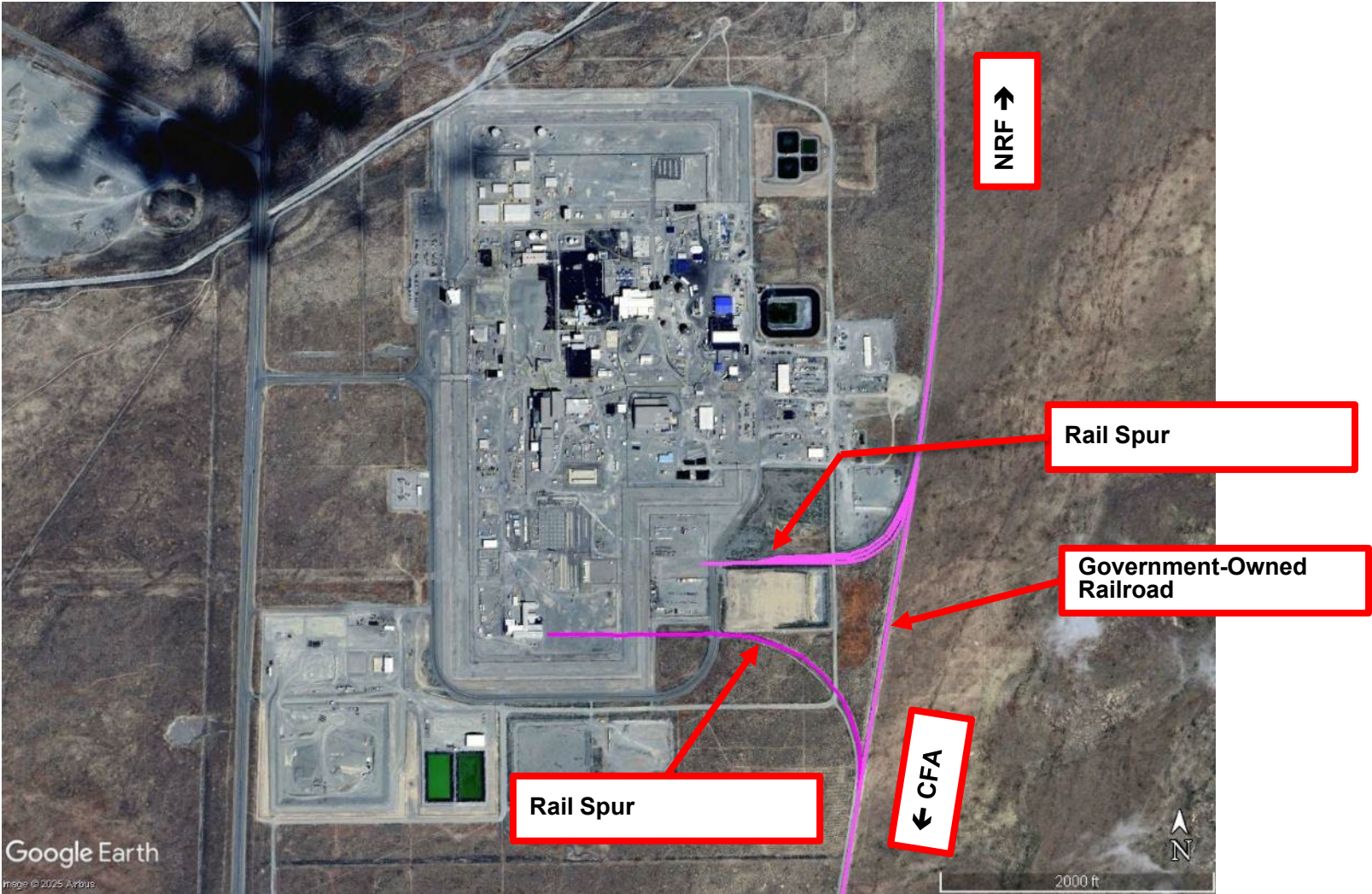
Rail Line at and Near CFA



Mobile Cranes Available at CFA



Aerial View of Idaho Nuclear Technical and Engineering Center (INTEC)



Aerial View of INTEC



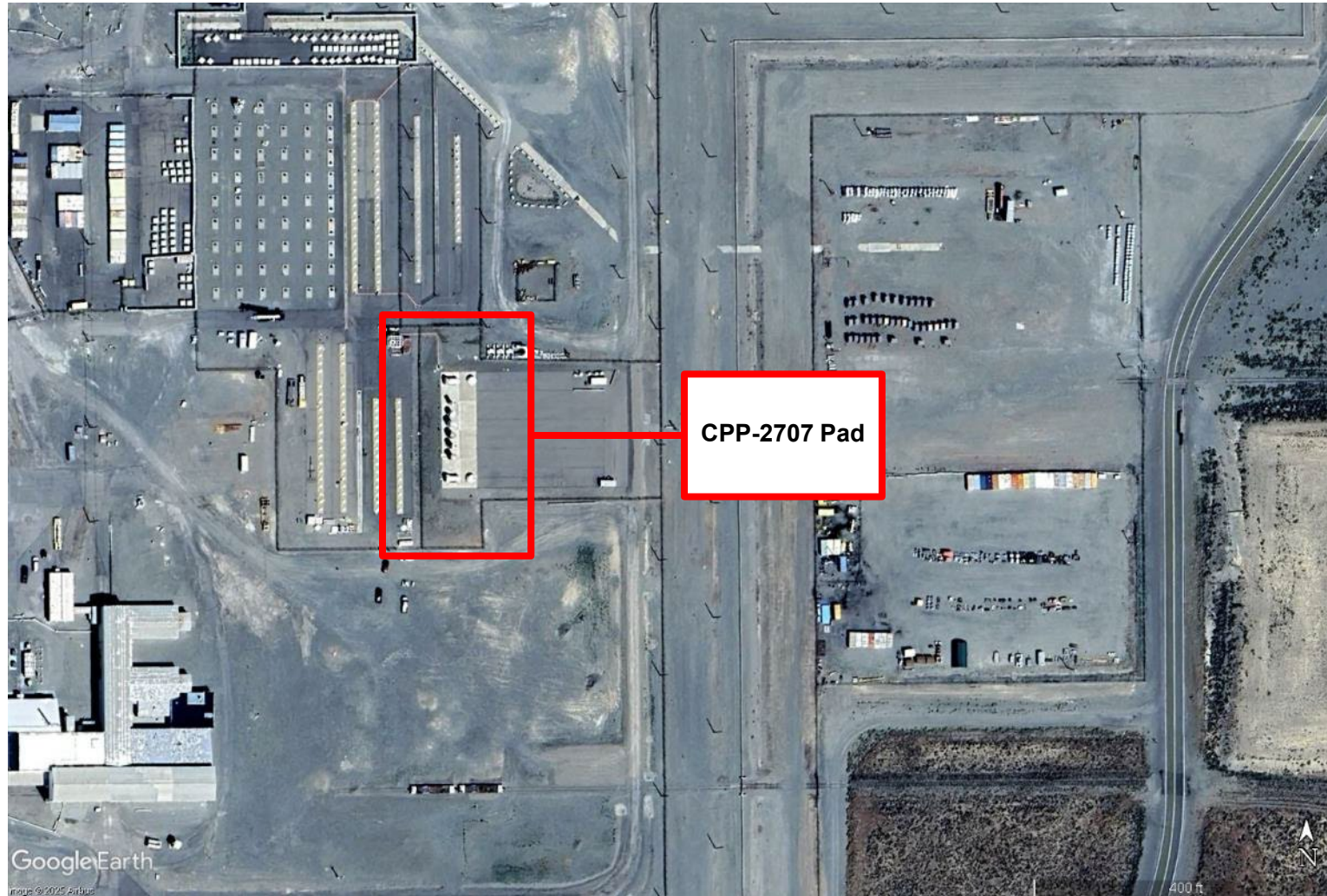
Track Near INTEC



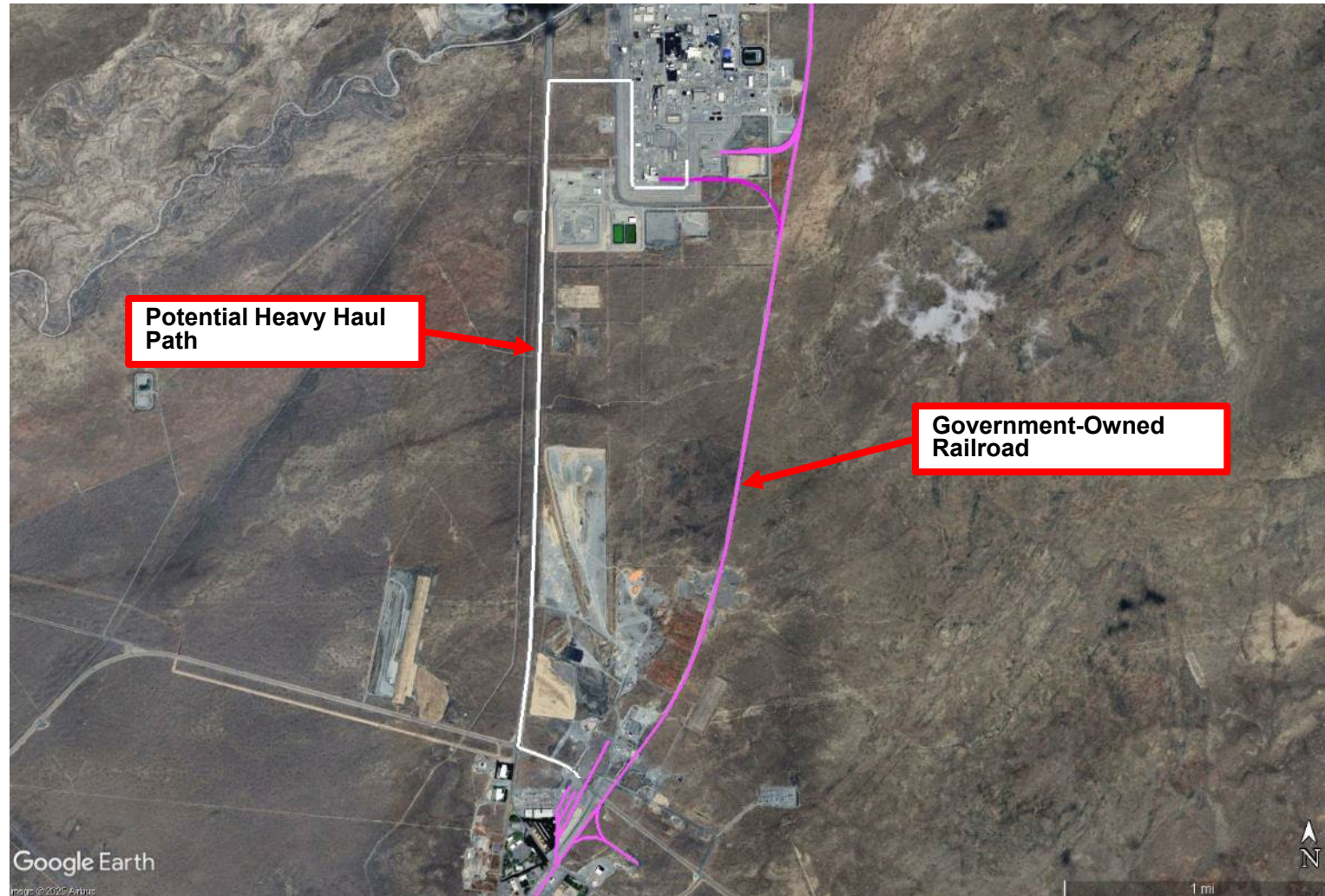
Track Near INTEC



Aerial View of CPP-2707 Pad at INTEC



Potential Heavy Haul Path From CFA to INTEC



Potential Heavy Haul Path at INTEC



Entrance to INTEC



Storage Casks on CPP-2707 Pad

①

②

③

④

⑤

⑥

⑦

⑧



① TN-BRP

② NuPAC 125B

③ TN-24P

④ VSC-17

⑤ MC-10

⑥ REA-2023

⑦ Castor V/21

⑧ TN-REG

Site Infrastructure Evaluation Participants

- Site infrastructure evaluations benefit from multi-party participation
- Participants included representatives from:
 - DOE (multiple offices) and national laboratories
 - EPRI
 - Federal Bureau of Investigation
 - Federal Railroad Administration
 - Shoshone-Bannock Tribes
 - Idaho Department of Environmental Quality
 - Idaho Department of Emergency Management
 - Idaho Public Utilities Commission
 - Orano
 - Tribal Radioactive Materials Transportation Committee
 - Union Pacific
 - Western Interstate Energy Board



Information Sharing Meeting for Local Leaders

- Purpose is to share information with local officials near the destination site and answer questions
- Invited Tribal leadership and local mayors, city councilmembers, Federal and State legislative representatives, etc.
- Provided visual aids and fact sheets
- The 2-hour meeting included:
 - Welcome from DOE-Idaho Operations Office and INL leadership
 - Presentation on HBURC project
 - Q&A
 - “Open House” informal Q&A
- Total attendance ~40 guests



Local Leaders Meeting



Questions?





U.S. DEPARTMENT
of **ENERGY**

Office of
Nuclear Energy

Spent Fuel and High-Level Waste Disposition