



U.S. DEPARTMENT OF  
**ENERGY** | OFFICE OF  
ENVIRONMENTAL  
MANAGEMENT

# **WIPP Update**

## **Southern States Energy Board**

### **Louisville, KY**

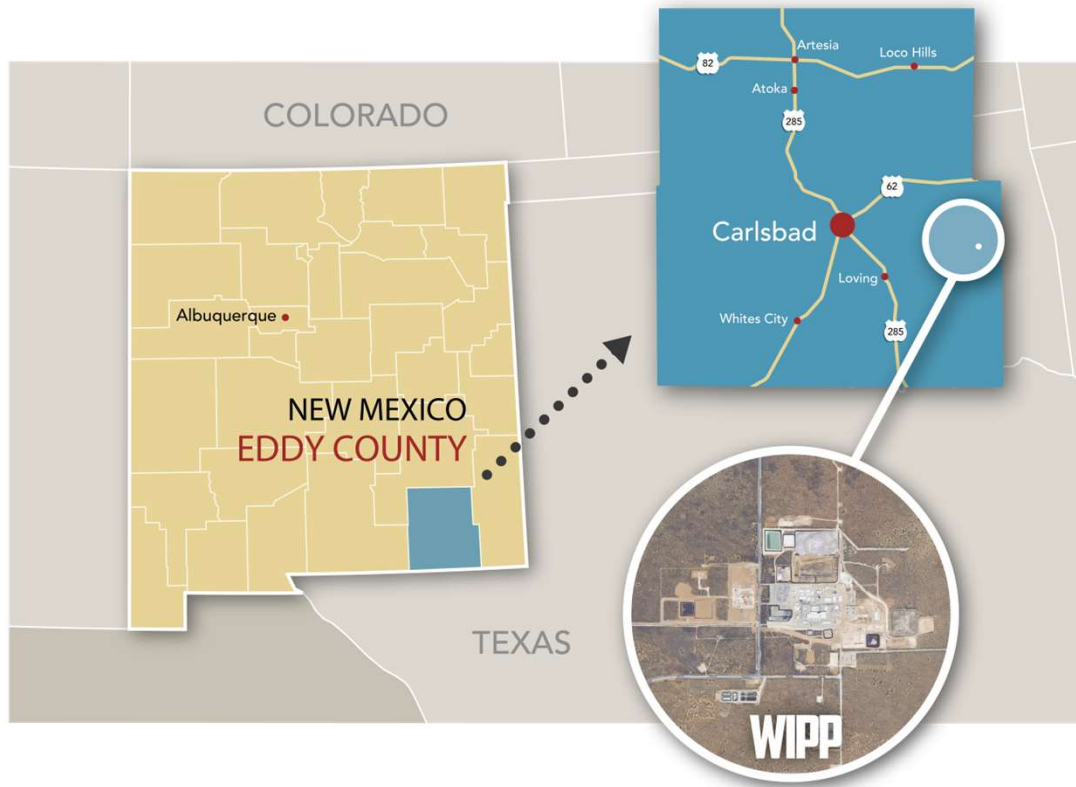
---

James Mason  
U.S. DOE-Carlsbad Field Office  
Institutional Affairs Manager

Bobby St. John  
Salado Isolation Mining Contractors, LLC  
External Communication Manager

December 13, 2023

# Waste Isolation Pilot Plant Mission



Our mission is to provide safe and compliant characterization, transportation, and disposal of the United States' defense transuranic (TRU) waste while protecting workers, the public, and the environment

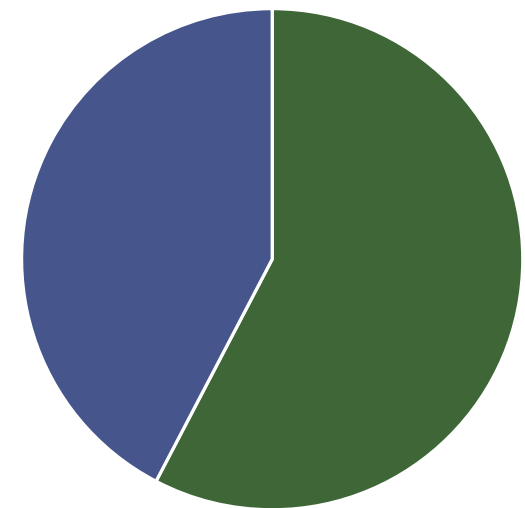


# Guidelines for WIPP Disposal

- WIPP Land Withdrawal Act (LWA)
- Defense generated transuranic
- Must meet WIPP Waste Acceptance Criteria
- WIPP Transuranic Waste Capacity 6.2M Ft<sup>3</sup>
  - Current volume capacity filled 2.6M Ft<sup>3</sup> (43%)



WIPP LWA Capacity (Cubic Feet)



■ LWA Remaining Capacity

# Safe Transportation

- Received 473 shipment in FY 2023
- Averaging 10 – 12 shipments/week
- Total shipments received
  - 13,749**
- Total loaded miles traveled
  - 16,453,692**

## FY23 shipping totals:

ANL	5
INL	348
LANL	68
LLNL	5
ORNL	21
SRS	26

As of 12/4/2023





# Increase Shipments

- Targeting 15-17 shipments per week
- Increase number of driver teams
- Increase number of waste handling employees
- Improve coordination with sites on shipping needs/schedules
- Improve planning for scheduled maintenance outages



# Waste Emplacement – Panel 8

- Waste emplacement began in November 2022
- Currently emplacing in Room 6, Panel 8
- Use of protective clothing not required
- Containers emplaced:
  - 12,644

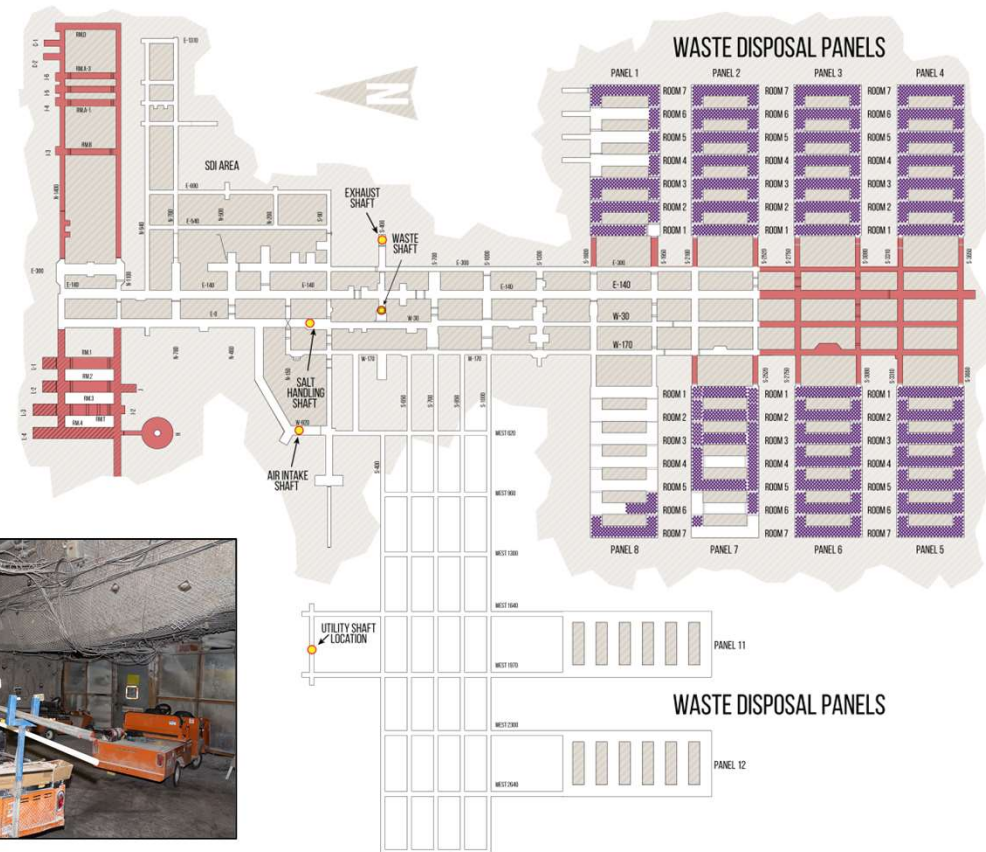


As of 12/4/02023



# Underground Status

- Mining done on just-in-time basis due to salt creep
- Currently mining access drifts to the west
- Drifts will tie into the Utility Shaft and replacement panels 11 and 12
- Preparing to equip west mains with infrastructure



# Infrastructure Investments

- Projects will:
  - Reduce maintenance down time
  - Improve operational efficiencies
  - Increase annual shipping rate
- Safety Significant Confinement Ventilation System (SSCVS)
- Utility Shaft (US)
- General Plan Project (GPP)



# Capital Projects

## Safety Significant Confinement Ventilation System (SSCVS)

Increasing airflow to the underground  
540,000 cfm

### Progress

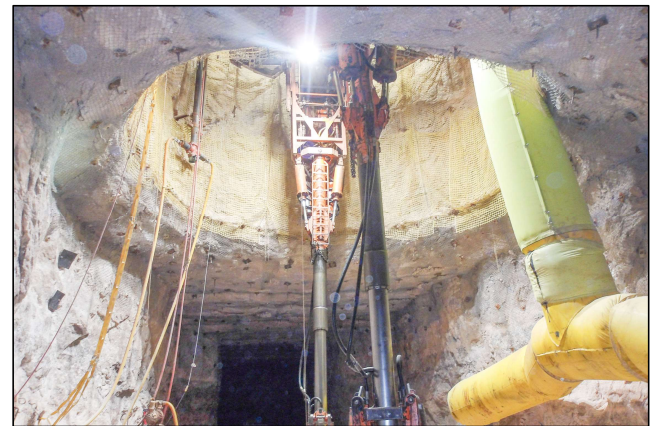
- Overall project about 83 percent complete
  - New Filter Building (NFB) about 80 percent complete
  - Salt Reduction Building (SRB) about 93 percent complete
- Exhaust stack now complete
- Commissioning underway





# Capital Project – Utility Shaft

- Providing higher-capacity air intake for the underground in conjunction with SSCVS system
  - Shaft sinking complete (2,275 feet)
  - 30-foot diameter shaft
    - (26-feet with liner in place)
  - Station development is underway
  - Mining equipment will be lowered to station
  - Mining drifts to tie into existing underground



# General Plant Projects

- Fire system improvements
- Substation upgrades
- Public address system
- SSCVS tie-ins
- Fuel station



# Accomplishments

- Total shipments received: **13,749**
- Total loaded miles traveled: **16,377,038**
- Total contact-handled waste containers emplaced: **280,337**
- Total remote-handled waste canisters emplaced: **775**
  - Shielded containers emplaced: **83**
- DOE sites cleaned up of all legacy TRU waste: **22**

As of 12/04/2023





