

SUPER LOADS NATIONAL TRANSPORTATION STAKEHOLDERS FORUM

Randy Dillon
Director Business Development
05/26/2023



SAFETY & COMPLIANCE

■ Regulatory Training

- 49 CFR Part 172, Subpart H (every 3 years)
 - General Awareness
 - Function Specific
 - Safety
 - Security Awareness
 - In-depth Security Awareness (Annual Review of Plan)
 - Driver (49 CFR § 177.816)
- FMCSR Part 397, Subpart D (every 2 years)
 - HRCQ quantity of Class 7

SAFETY & COMPLIANCE

- Function Specific & In-depth Security - Additional Training
 - Job Specific
 - 1-3 weeks in advance of move to discuss
 - Loading
 - Shipping Papers
 - Hazards of the material
 - Routing
 - Incident reporting (Customer, Carrier, Regulatory)

SAFETY & COMPLIANCE

■ Additional Training

– Quarterly Safety Meetings

- Regulatory Updates
- Trends in claims or inspections
- Seasonal Topics
- Driver Wellness

– Monthly Driver All Call

- Safety
 - In-depth discussion related to previous month (events, inspection, monthly safety topic, regulatory)
- Operational
- Guest (Typically this is a safety, regulatory, or operational guest)

SAFETY & COMPLIANCE

■ Additional Training (continued)

– Corrective Action

- Accidents

- Accident Review Board reviews all at fault accident
 - » Systematic Review
 - » Recommend to Mgmt. actions that may be taken to prevent vehicle accidents
 - » Assign disciplinary action to be taken, when appropriate

- Roadside Inspection Violation

- Safety Director Review
 - » Ensure all required regulatory steps are followed (if Vehicle Maintenance DVIR/Repairs)
 - » Assign corrective action and/or disciplinary action, when appropriate

SAFETY & COMPLIANCE

- Additional Training (continued)
 - Predictive Analytics
 - Professional Development Plans for drivers with trends associated with at risk behaviors
 - Risk Manager Analysis
 - Quarterly Review of analytics

SAFETY & COMPLIANCE

■ Permits & Registrations

– Regulatory (State & Federal)

- All permits & registrations are reviewed on a weekly basis
- Timeline for renewals are assigned to ensure appropriate time is given to obtain renewals

– Over Dimensional

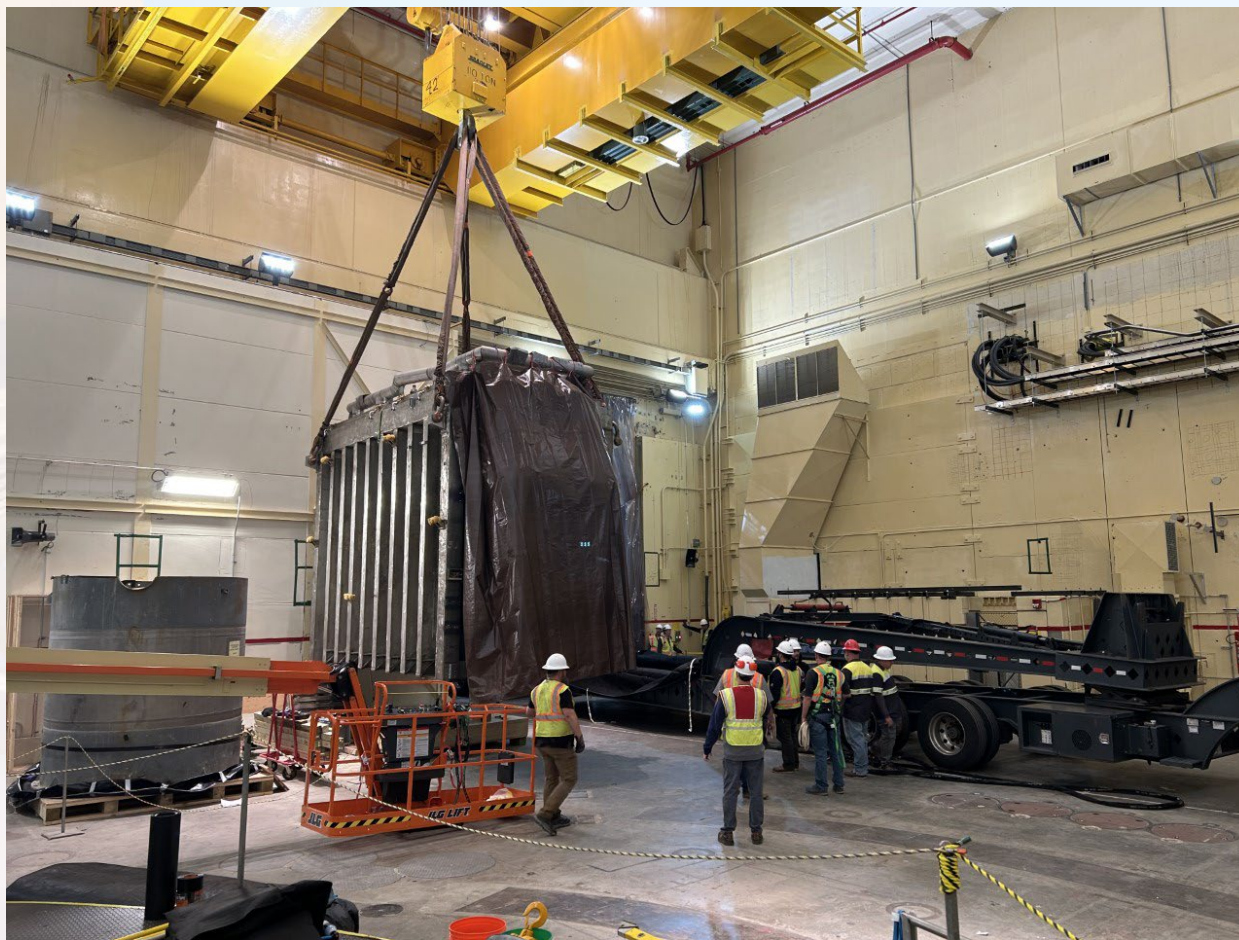
- Standard (up to super) permits are ordered by internal permit department
- Super loads are assigned to an internal permit specialist

LOAD SPECIFIC PREPARATION AND TRAINING

- Months of pre planning and team working together
- Function Specific Training specific to the actual load
- Looking at every possible scenario from an accident perspective
- Day of loading meeting for critical lift and understanding that anyone can stop the work if needed
- Full review of all DOT requirements for markings, labeling, packaging, and paperwork
- Ensuring 24 hour emergency response information is understood
- Drivers participating in the load meeting with customer on day of loading
- Full review of loading location and surrounding obstacles if any















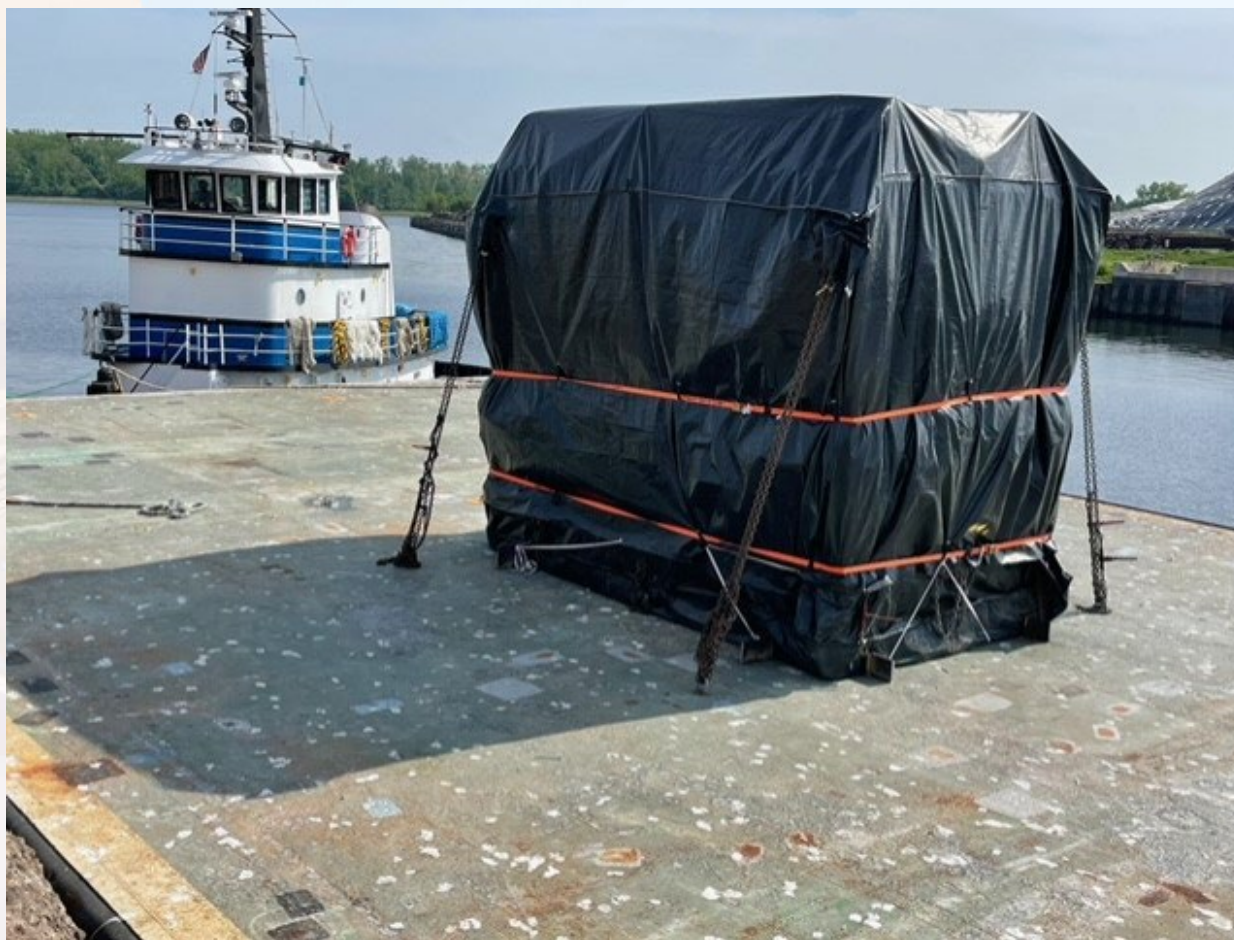












Questions