



Critical Energy Strategies for the United States

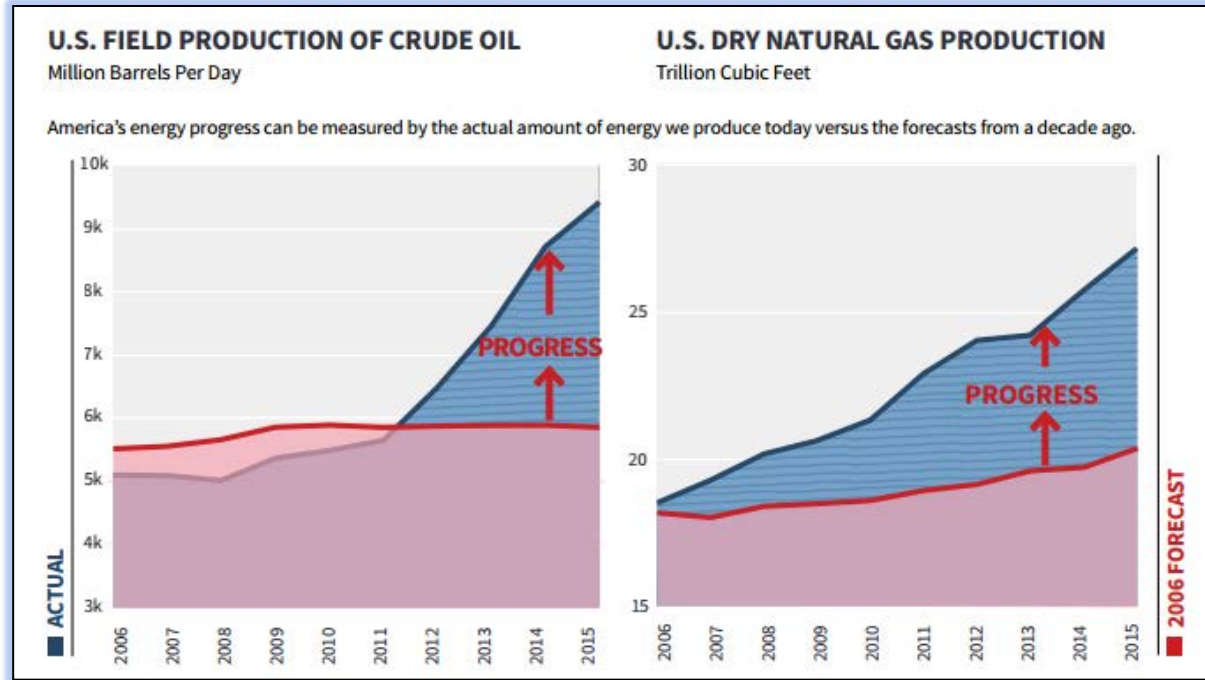
Southern States Energy Board

**Louis Finkel, Executive Vice President
American Petroleum Institute
September 26, 2016**

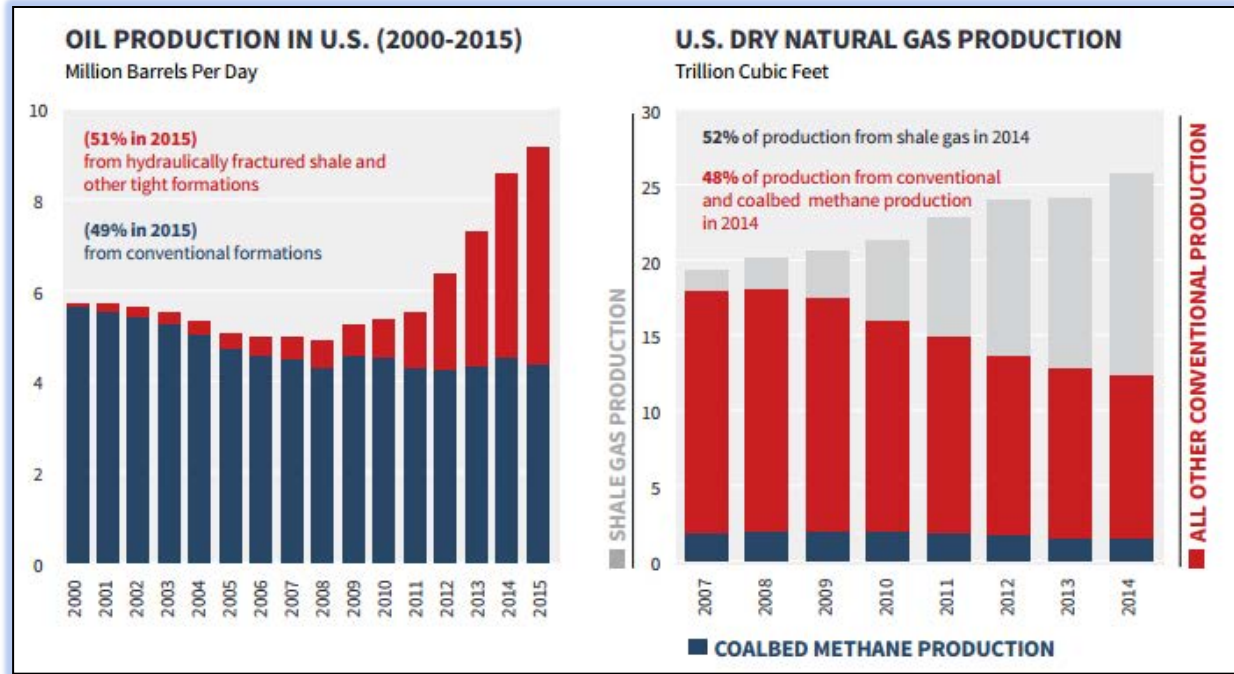
What does an American Energy Renaissance look like?

- Global Energy Leadership
- Affordable, Reliable and Abundant Energy
- Lower Consumer Costs
- Cleaner Environment

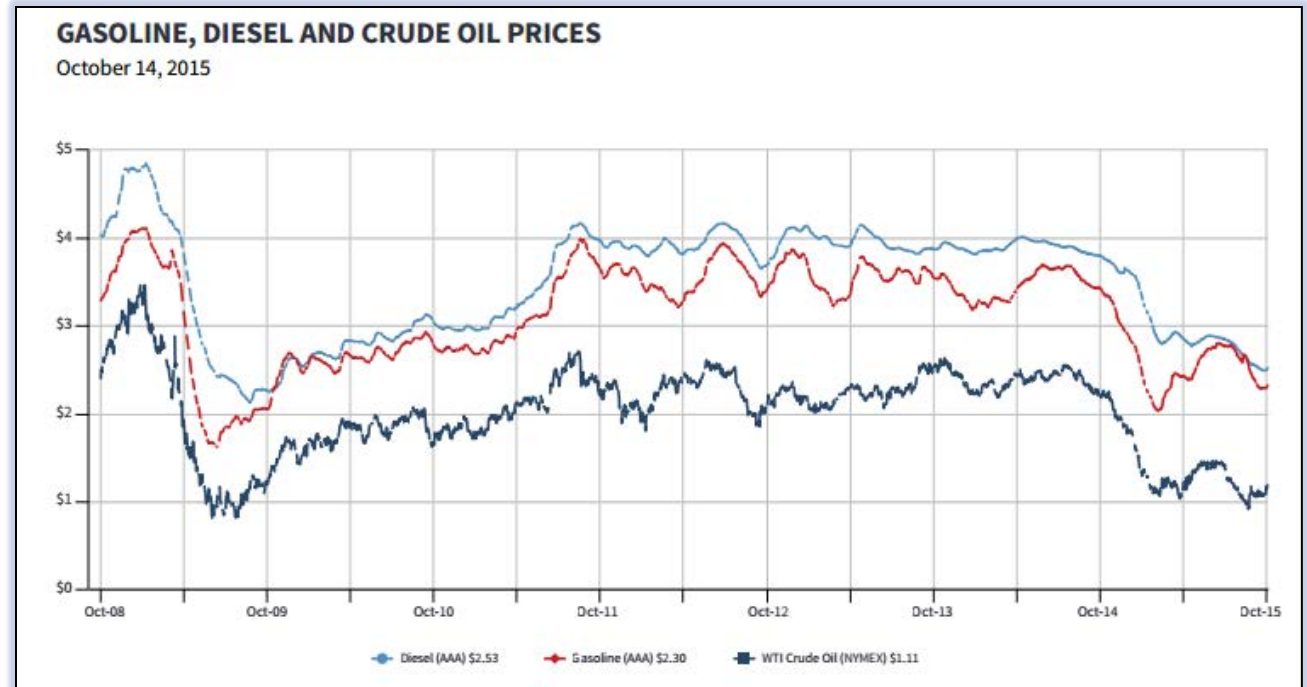
American Energy Renaissance



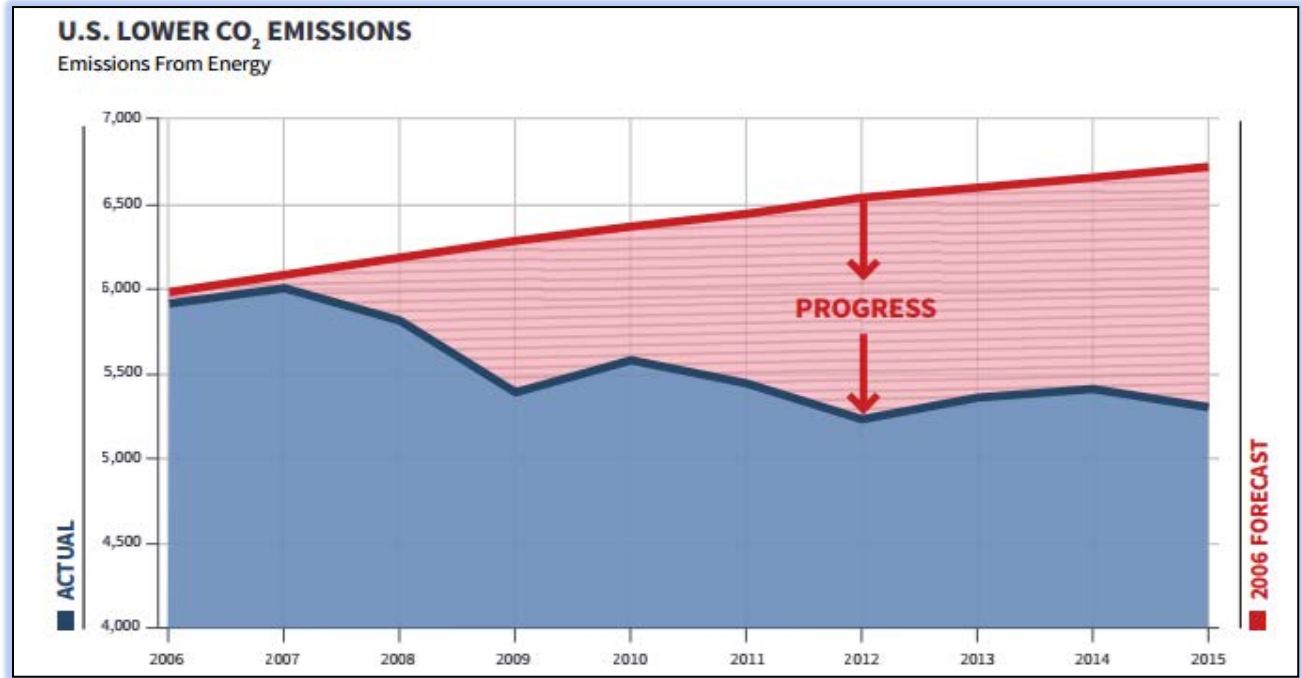
American Energy Renaissance



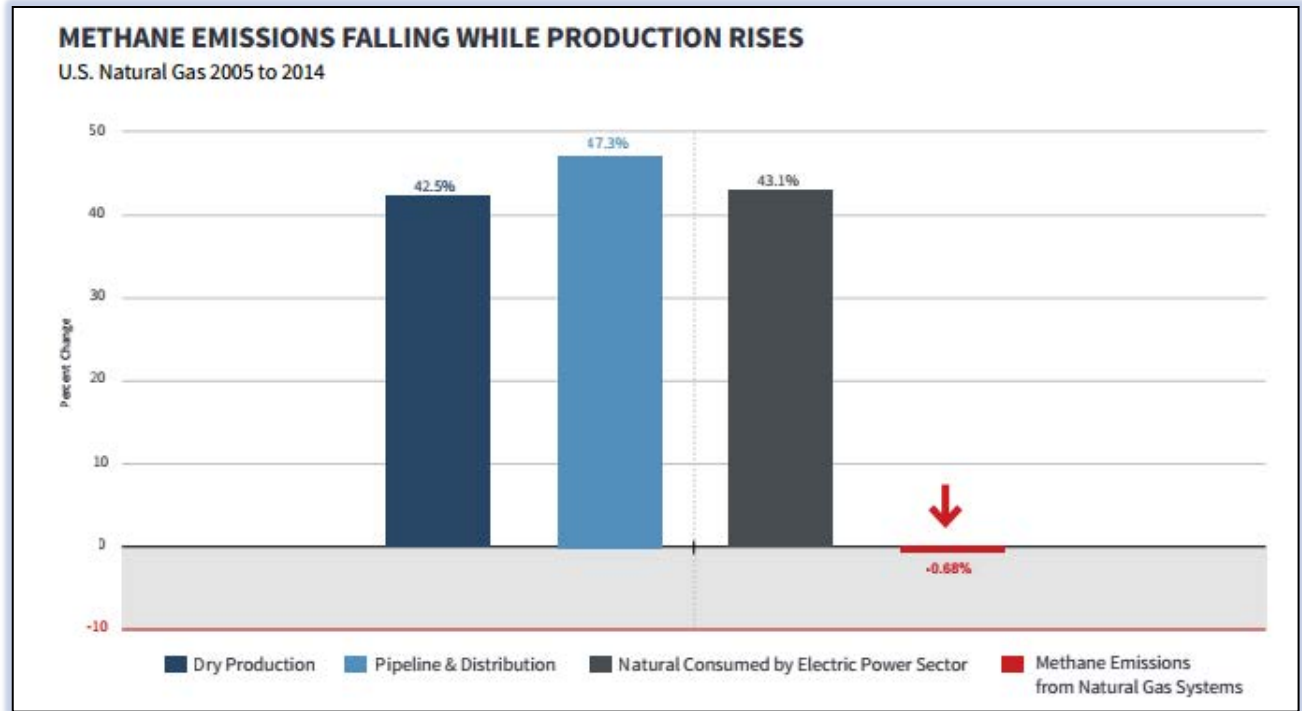
Consumer Benefits



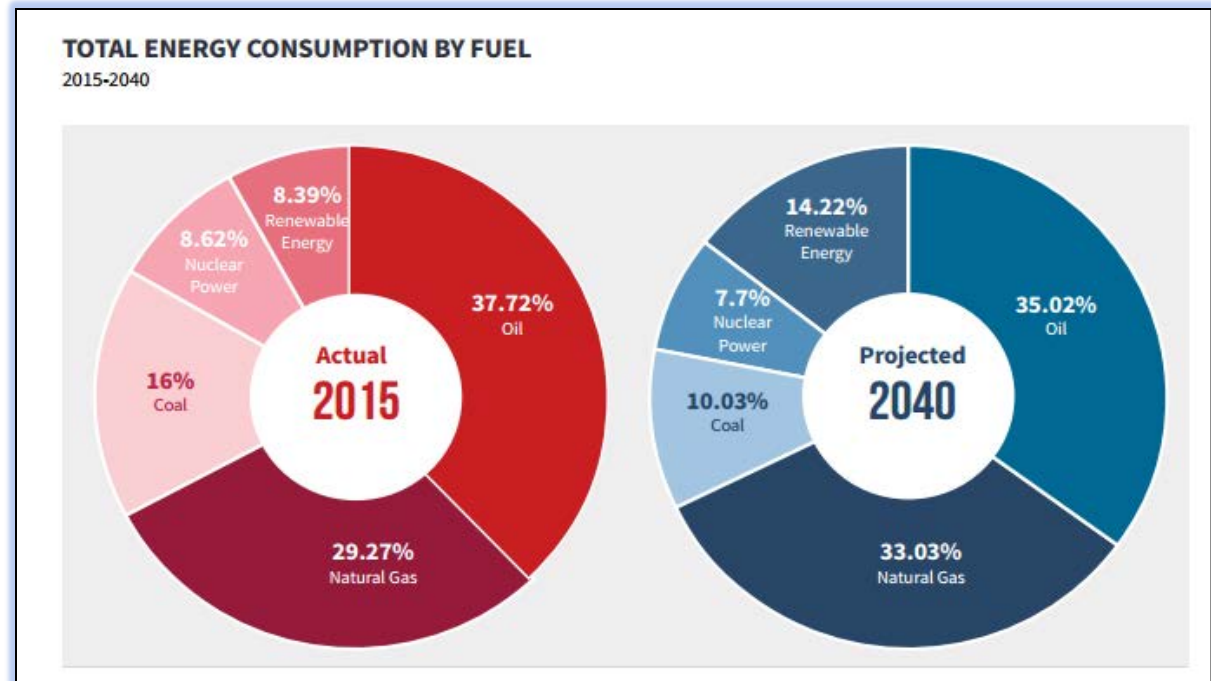
U.S. Energy Production Up Emissions Down



U.S. Energy Production Up Emissions Down



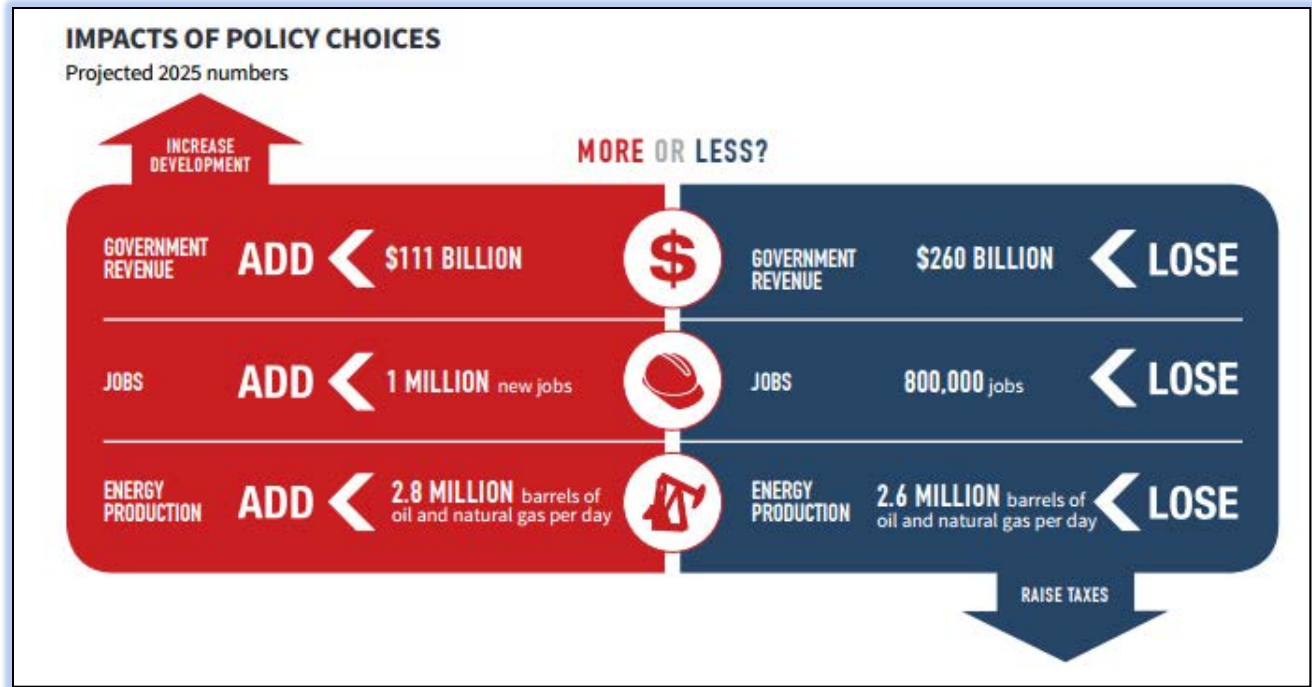
More Energy Today and Tomorrow



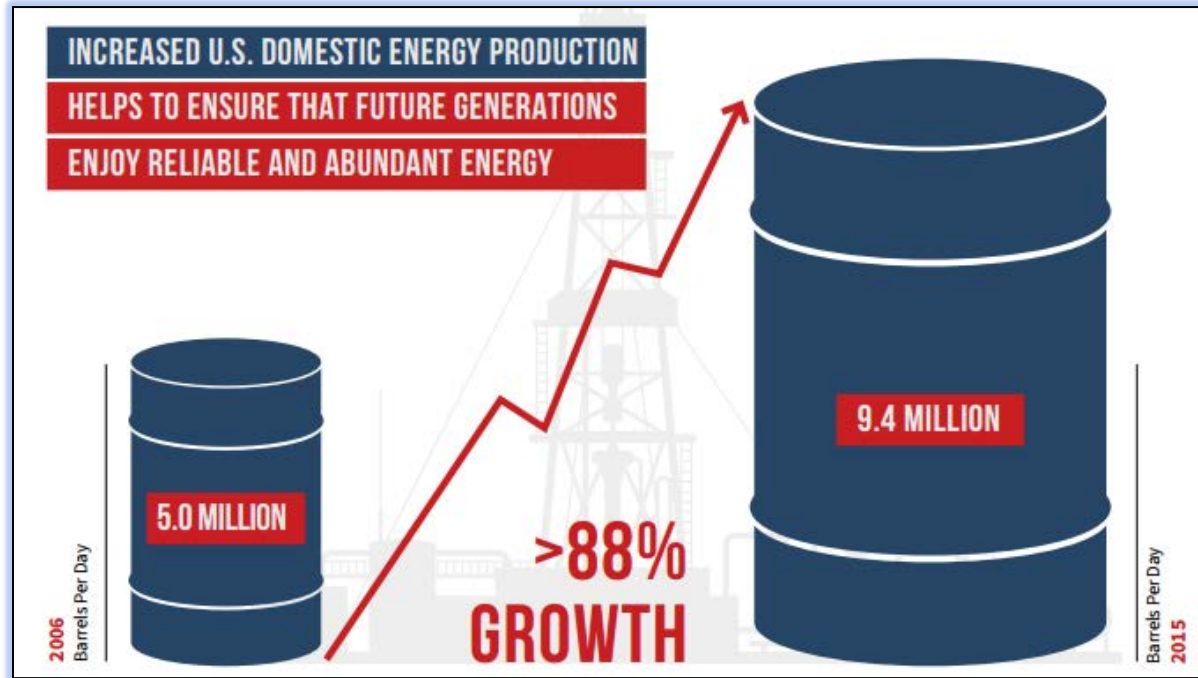
Policy Matters

**With the right policies, we can grow energy production,
our economy and revenue for the government.**

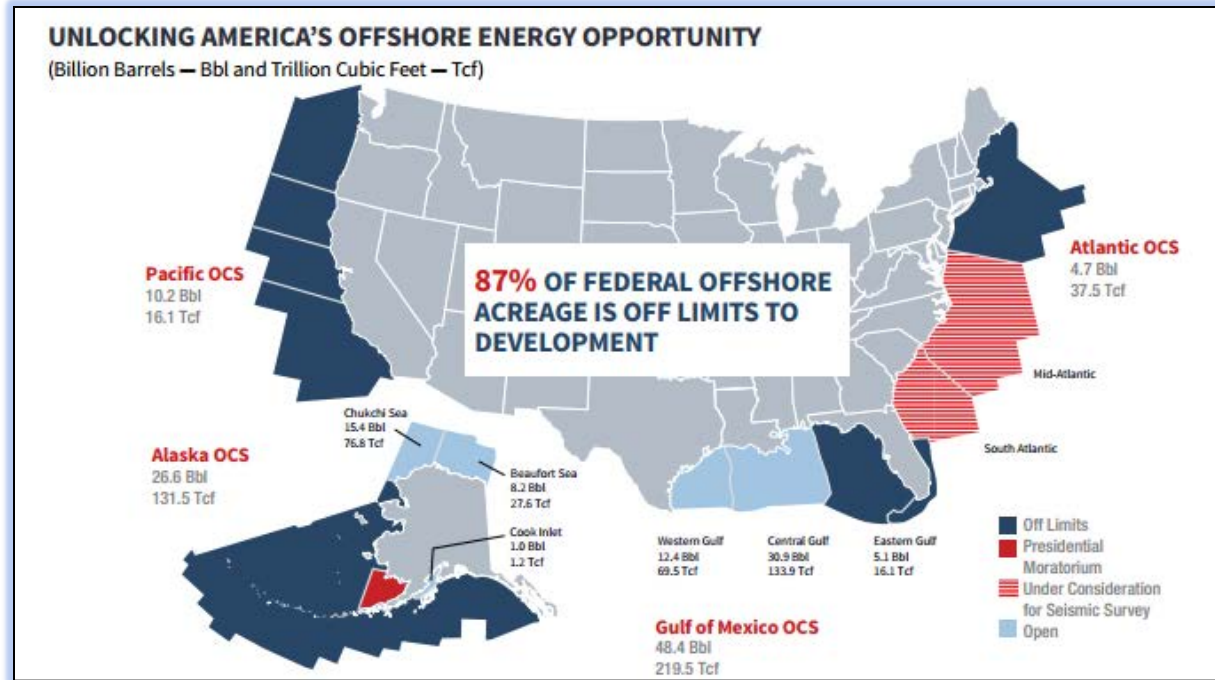
Policy Matters: Two Paths



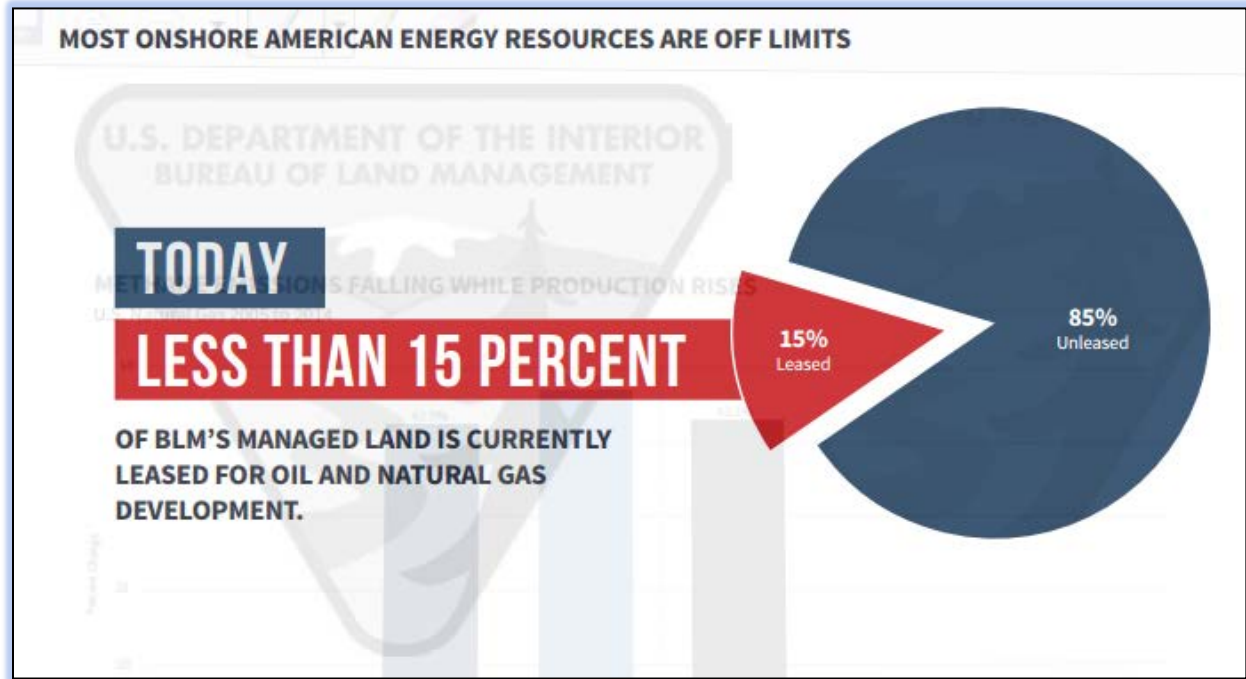
Policy Matters: Two Paths



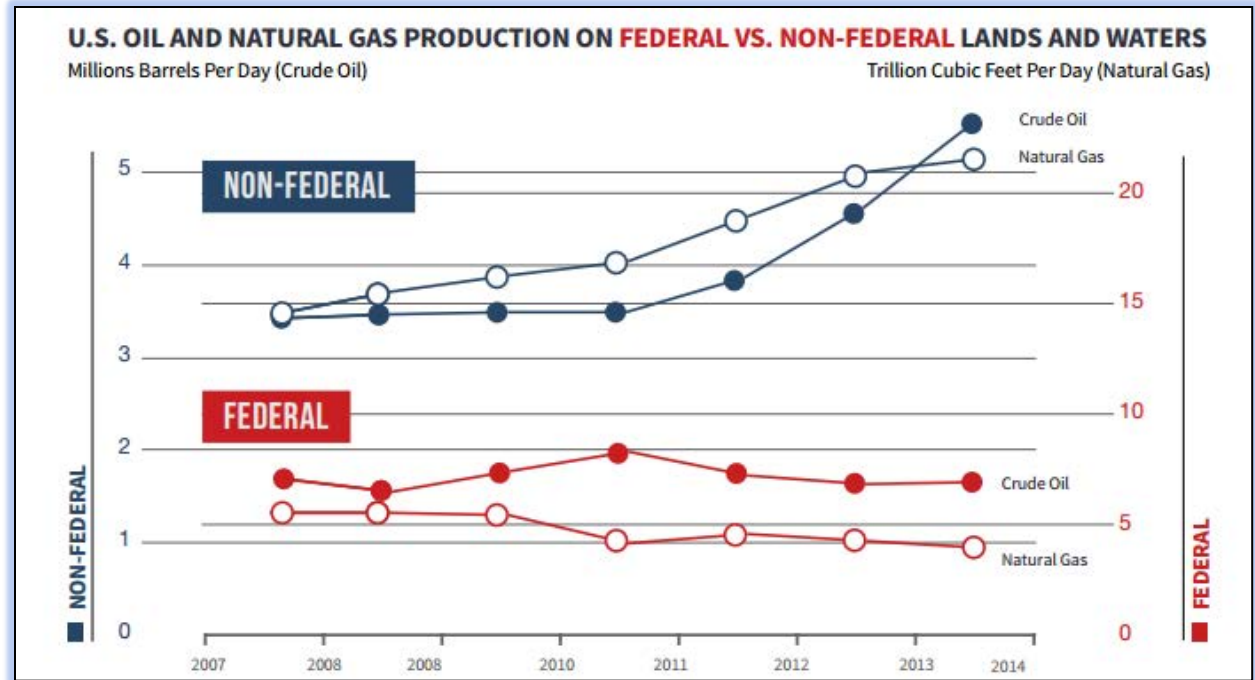
Most Federal Land Off Limits to Energy Production



Most Federal Land Off Limits to Energy Production



Private Sector Land Leading American Energy Renaissance



Infrastructure Investments

According to an IHS study the amount of energy sector infrastructure needed through the middle of the next decade could:

- ❑ Spur \$1.15 trillion in private capital investment
- ❑ Support 1.1 million jobs nationally
- ❑ Contribute \$120 billion to U.S. gross domestic product
- ❑ Increase government revenue by more than \$27 billion through 2025

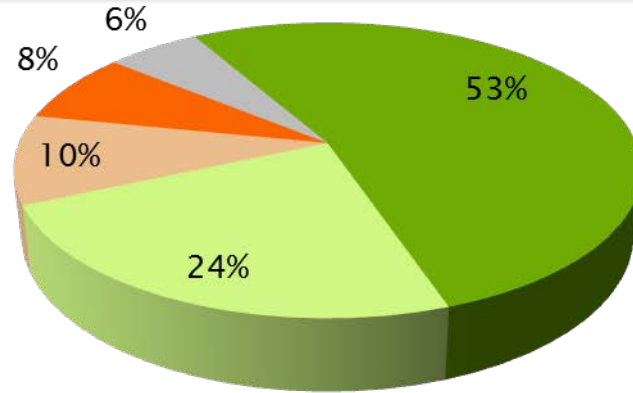
Infrastructure Investments: Consumer Impacts

Lack of infrastructure harms consumers and our economy

- ❑ According to an EIA report, electricity customers in New England paid as much as 69 percent more for their electricity last winter; and**
- ❑ The region's industrial sector paid as much as 90 percent more, in part because of infrastructure limitations.**

Voters Strongly Support Increased Production Of Crude Oil and Natural Gas

Do you support or oppose increased production of oil and natural gas resources located here in the U.S.?



1,001 Registered Voters Nationwide
May 10-15, 2016

■ Strongly support
■ Strongly oppose

■ Somewhat support
■ Don't Know/Refused

■ Somewhat oppose

Critical Energy Strategies for the United States

**Louis Finkel, Executive Vice President
American Petroleum Institute**