

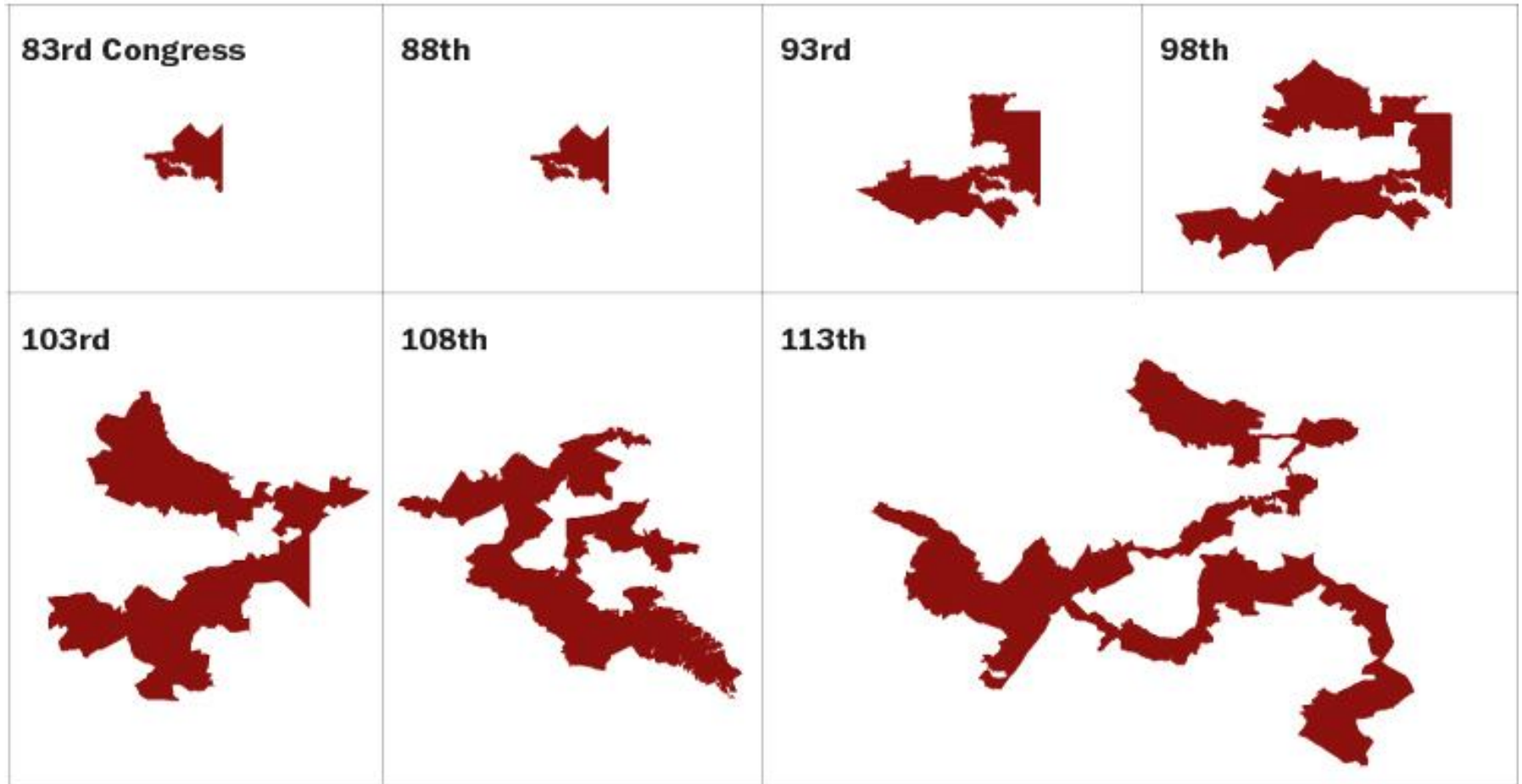
# Southern States Energy Board Winter Meeting



NUCLEAR ENERGY INSTITUTE

nuclear. clean air energy.

## THE EVOLUTION OF MARYLAND'S THIRD DISTRICT



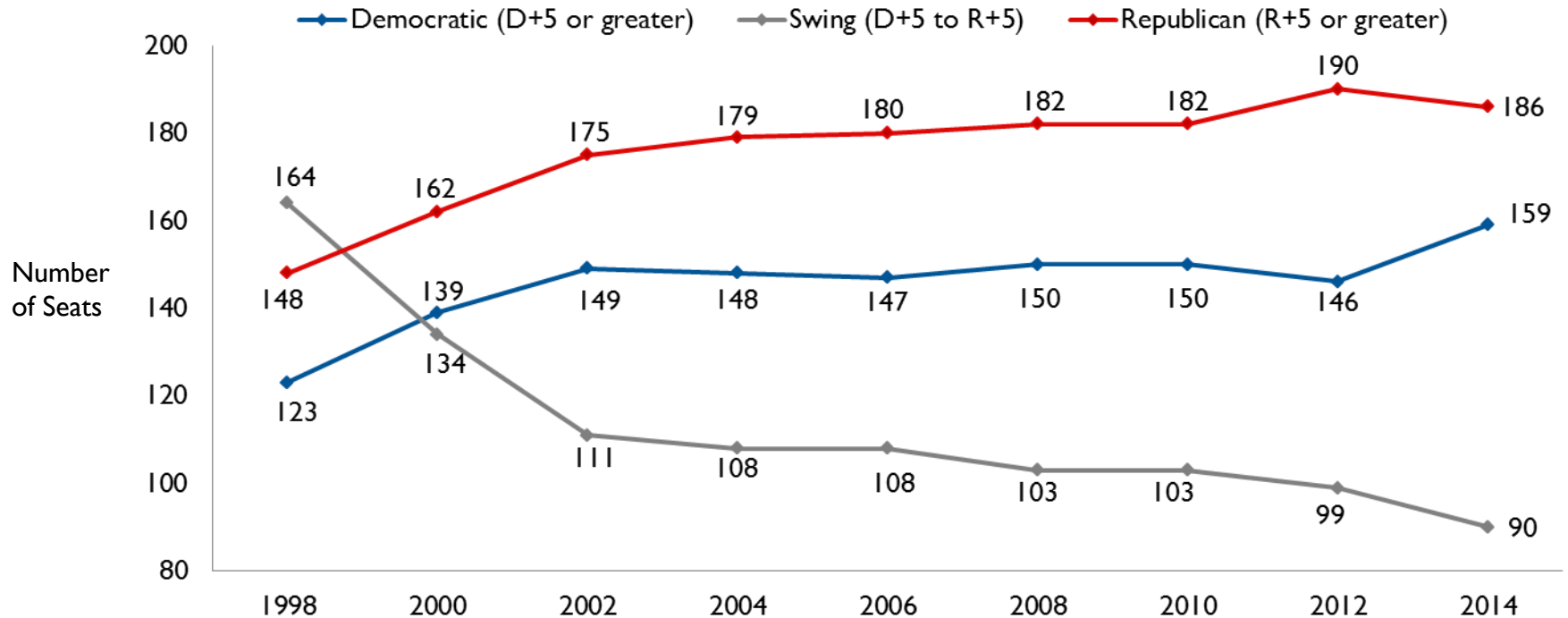
SOURCE: Shapefiles maintained by Jeffrey B. Lewis, Brandon DeVine, Lincoln Pritcher and Kenneth C. Martis, UCLA.  
Drawn to scale.

GRAPHIC: The Washington Post. Published May 20, 2014.

# In House, Fewer “Swing” Seats, More Polarization

*Charlie Cook Rates the Districts*

House Makeup by Cook Partisan Vote Index



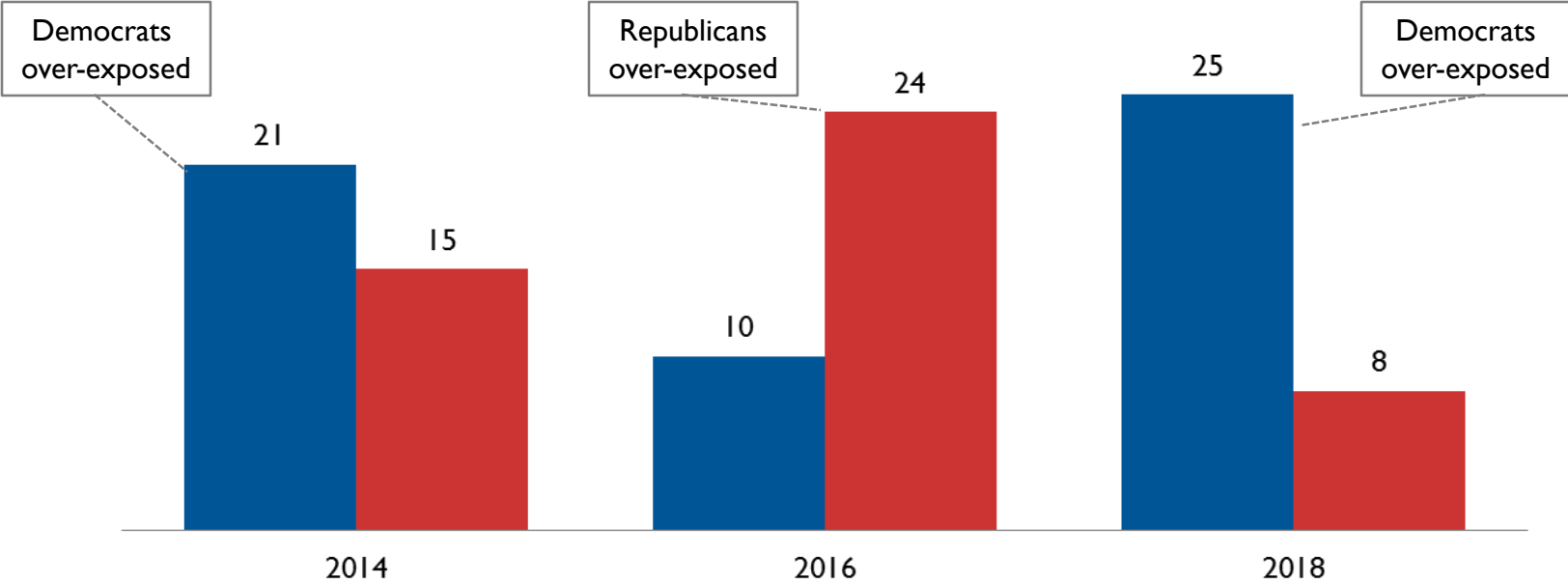
## Analysis

- According to the Cook Partisan Vote Index, the number of swing seats in the House has dropped 45%, from 164 in 1998 to 90 in 2014
- Fewer swing seats means more polarization in Congress
- As district populations grow increasingly liberal or conservative, incumbents fear radical primary challengers

# Dems, Republicans Will Take Turns Playing Defense in Midterms Ahead

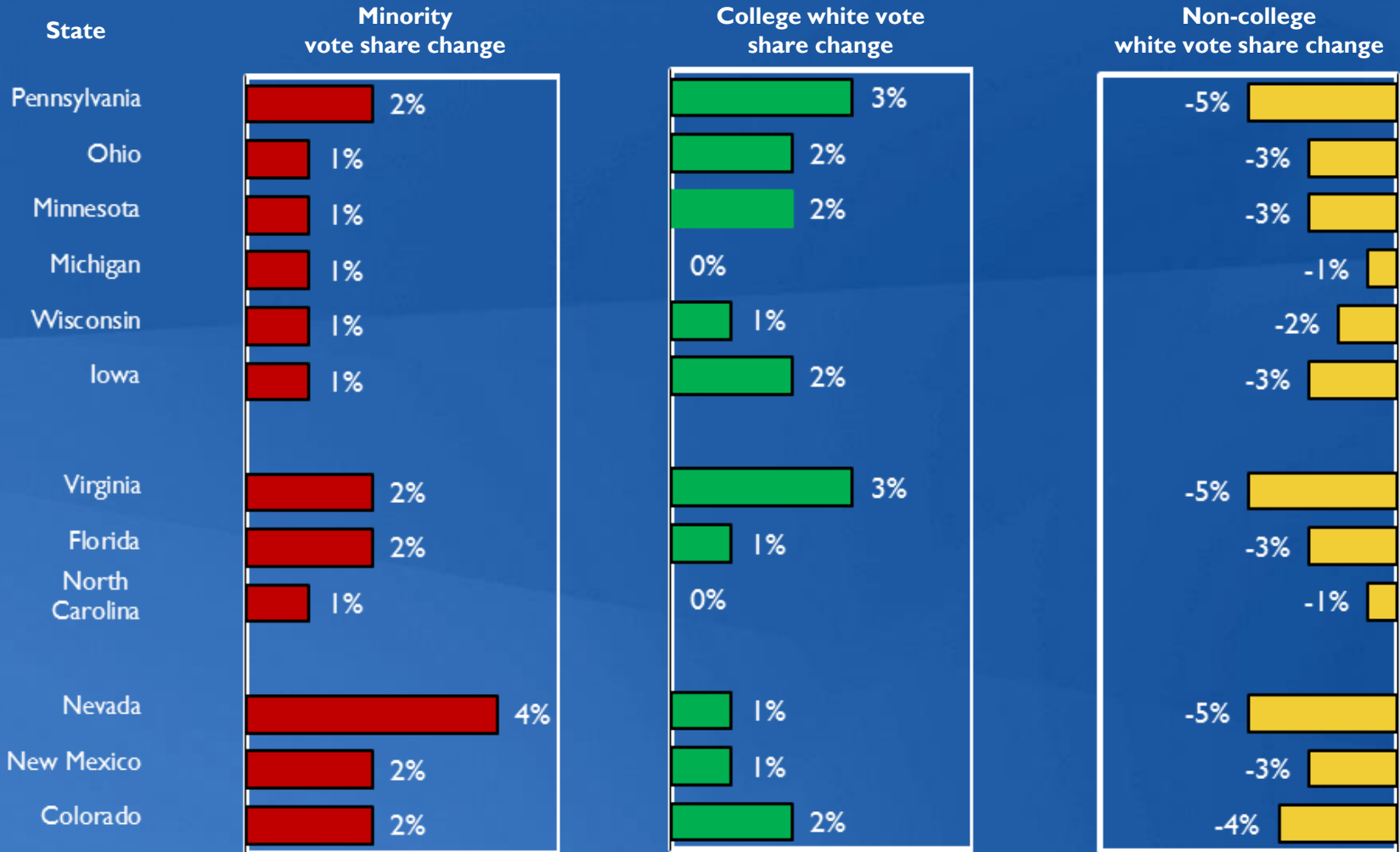
Senate seats in play, by election year

■ Democratic seats      ■ Republican seats



# The U.S. Population is Changing

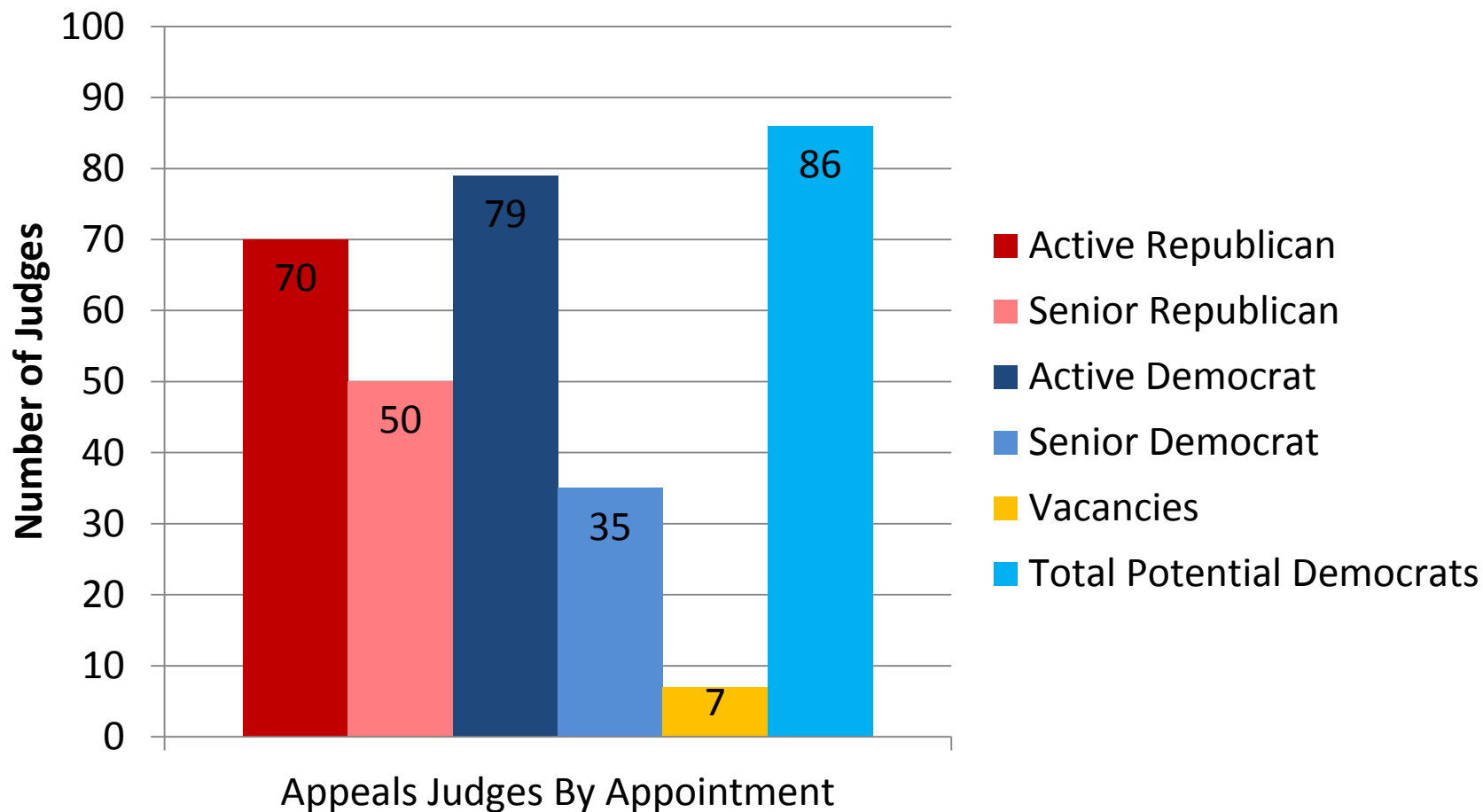
Voter Demographics in Key States  
2008 – 2012



Source: <http://www.nationaljournal.com/magazine/u-s-transforming-into-majority-minority-nation-faster-than-expected-20110331>;  
<http://www.nationaljournal.com/columns/on-the-trail/obama-s-silver-demographic-linings-20111130>; Center for American Progress, The Path to 270, Nov 2011.



# Total Composition of Court of Appeals Judges



# Composition of the Supreme Court

Year	Total	Appointed	Appointed	Vacant	BHO	BHO	GWB	GWB	WJC	WJC	GHWB	RWR	RWR	JEC	RMN	RMN	LBJ	JFK	DDE	DDE	HST	FDR	FDR	FDR
		by	by		2	1	2	1	2	1		2	1		2	1		2	1	2	1	2	3	2
		Republican s	Democrat s																					
Current	9	5	4	-	-	2	2	-	-	2	1	2	-	-	-	-	-	-	-	-	-	-	-	-
2012	9	5	4	-	-	2	2	-	-	2	1	2	-	-	-	-	-	-	-	-	-	-	-	-
2008	9	7	2	-	-	-	2	-	-	2	2	2	-	-	1	-	-	-	-	-	-	-	-	-
2004	9	7	2	-	-	-	-	-	-	2	2	2	1	-	1	1	-	-	-	-	-	-	-	-
2000	9	7	2	-	-	-	-	-	-	2	2	2	1	-	1	1	-	-	-	-	-	-	-	-
1996	9	7	2	-	-	-	-	-	-	2	2	2	1	-	1	1	-	-	-	-	-	-	-	-
1992	9	8	1	-	-	-	-	-	-	-	2	2	1	-	1	2	-	1	-	-	-	-	-	-
1988	9	7	2	-	-	-	-	-	-	-	-	2	1	-	1	2	1	1	-	1	-	-	-	-
1984	9	7	2	-	-	-	-	-	-	-	-	-	1	-	1	4	1	1	-	1	-	-	-	-
1980	9	7	2	-	-	-	-	-	-	-	-	-	-	-	1	4	1	1	1	1	-	-	-	-
1976	9	7	2	-	-	-	-	-	-	-	-	-	-	-	1	4	1	1	1	1	-	-	-	-
1972	9	6	3	-	-	-	-	-	-	-	-	-	-	-	-	4	1	1	1	1	-	-	-	1
1968	9	4	5	-	-	-	-	-	-	-	-	-	-	-	-	-	2	1	1	3	-	-	-	2
1964	9	4	5	-	-	-	-	-	-	-	-	-	-	-	-	-	-	2	1	3	1	-	-	2
1960	9	5	4	-	-	-	-	-	-	-	-	-	-	-	-	-	-	-	2	3	1	-	-	3
1956	9	3	6	-	-	-	-	-	-	-	-	-	-	-	-	-	-	-	-	3	1	1	-	4
1952	9	0	9	-	-	-	-	-	-	-	-	-	-	-	-	-	-	-	-	-	2	2	1	4
1948	9	0	9	-	-	-	-	-	-	-	-	-	-	-	-	-	-	-	-	-	-	2	2	5

# Strategic Political Outlook

