



U.S. DEPARTMENT OF
ENERGY

OFFICE OF
**ENVIRONMENTAL
MANAGEMENT**

WIPP Update

James Mason

Institutional Affairs Manager

Emergency Management Manager

Carlsbad Field Office

December 2014

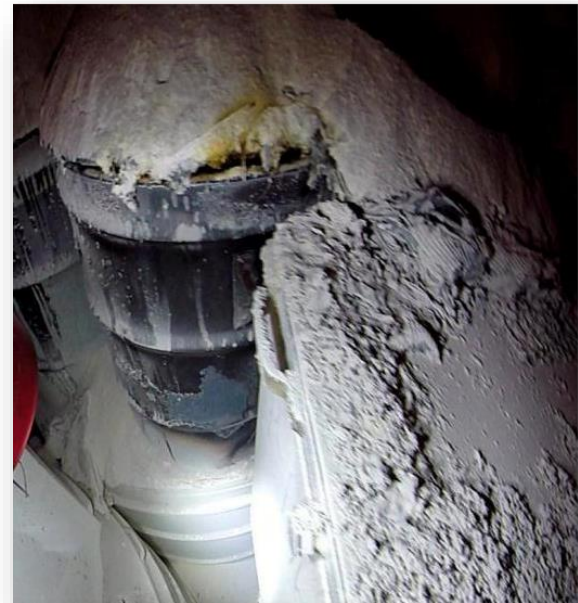
February 5 Underground Fire



Accident Investigation Board
Report

- Completed

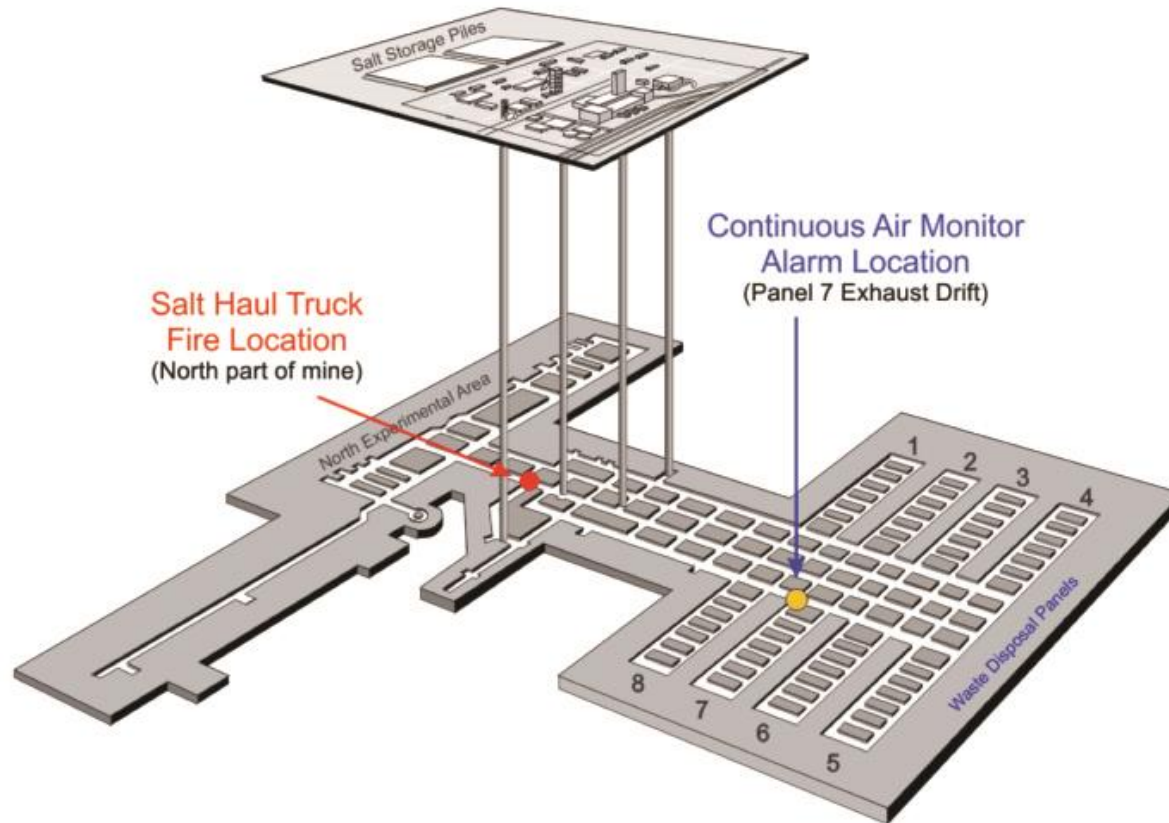
February 14 Radiological Release



Accident Investigation Board
Report

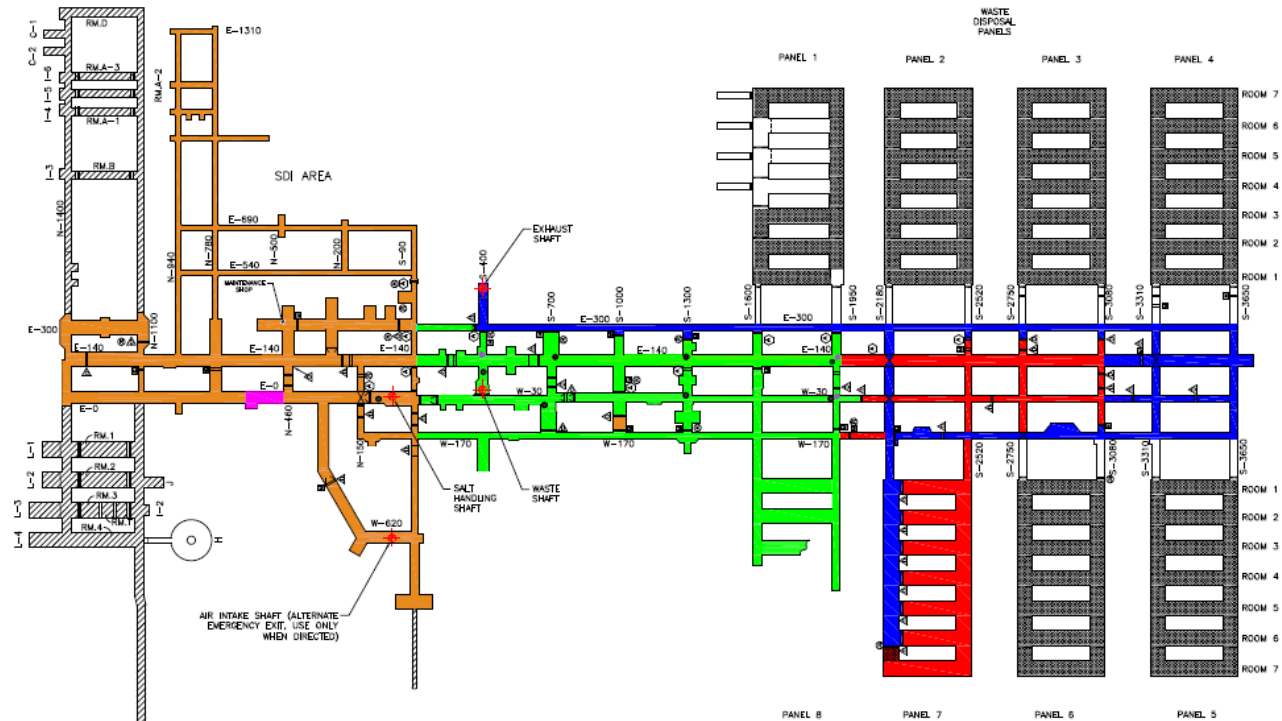
- Phase I completed
- Phase II – in progress

Event Locations in Underground



Progress on the Recovery

- Extensive radiological rollback
- Mine structure evaluation encouraging
- Highest priority or preparations to resume bolting
- Panel 6 and Panel 7, Room 7 closure



DEFINITIONS	LEGEND
<p>RBA - < 20 dpm/100cm³ ALPHA REMOVABLE < 200 dpm/100cm³ BETA REMOVABLE</p> <p>CA - > 20 dpm/100cm³ ALPHA REMOVABLE > 200 dpm/100cm³ BETA REMOVABLE</p> <p>HCA - > 2,000 dpm/100cm³ ALPHA REMOVABLE > 20,000 dpm/100cm³ BETA REMOVABLE</p> <p>SURVEY PROCESS FOR ROLLBACK INVOLVES CONTINUOUS DIRECT SCANS OF THE DRIFT AND SWEARS EVERY 10FT ON THE RIBS, GROUND, AND EQUIPMENT.</p> <p>PANEL 7 - 20,000-80,000 dpm/100cm³</p> <p>PANEL 7, ROOM 7 - > 1 million dpm/cm³ ALPHA ON THE EXPOSED WASTE</p> <p>S-2520 TO S-3080 - SPOTS RANGING FROM 200 TO 500 dpm/100cm³ ALPHA</p>	<p>CONTROLLED AREA</p> <p>MSHA RESTRICTED</p> <p>RBA</p> <p>ESS RESTRICTED AREA</p> <p>POTENTIAL CONTAMINATION AREA</p> <p>HIGH CONTAMINATION AREA/AIRBORNE RADIOACTIVE AREA</p> <p>CAM</p> <p>PAS</p> <p>INACCESSIBLE</p> <p>NOTES</p> <p>1. DRIFT WIDTHS NOT TO SCALE, ENLARGED 2X FOR CLARITY.</p> <p>2. EXISTING EXCAVATION REFLECTS STATUS AS OF 1/20/14.</p>

Decontamination

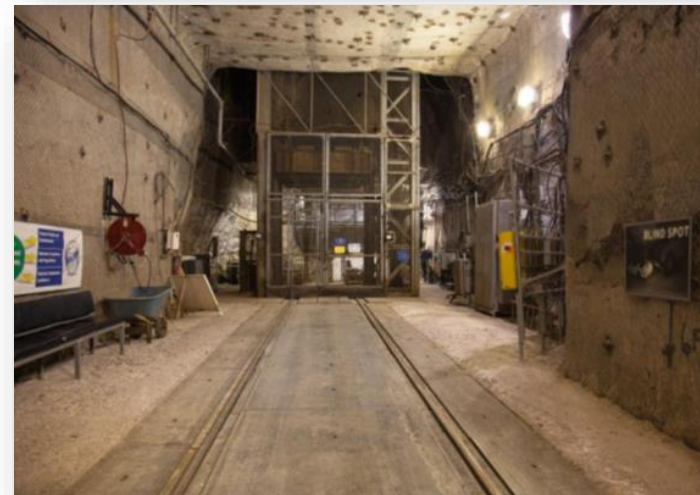
Contaminated surfaces in the underground will be managed as follows:

- Contamination will be fixed or sealed to the mine surface
- Anticipated use of water spray for most areas of low contamination
 - Will create a crust on salt surfaces
- Higher activity areas will utilize a spray-on fixative application
- After fixing, floors will be covered with a brattice cloth barrier and ~ 4 inches of mined salt.



Recovering the Underground

- Resumption of bolting a high priority
 - Preventative maintenance activities on equipment completed
 - Bolting to begin in early November
- Waste hoist
 - Camera inspection of shaft/ropes completed
 - Preventive maintenance and inspections completed
 - Now operational for transport of equipment only



Current Status

- Ventilation in Filtration Mode
 - 60,000 cfm of filtered air
- Note: WIPP's standard (unfiltered) operational airflow is 425,000 cfm
 - WIPP Permit requires 260,000 cfm

Recovery Actions

- **Phase I** – HEPA skid and fan unit
 - 114,000 cfm of airflow
- **Phase II** – Reconfiguring mine circuits and additional fans
 - 180,000 cfm airflow
- **Phase III** – Design and construct a new (permanent) ventilation system
 - Capable to provide 420,000 cfm



Panel 6 Closure Plans

- Closure of Panel 6 is a high priority of the WIPP recovery plan
- NMED approved the initial closure for WIPP Panel 6
 - Includes chain-link, brattice cloth, some run-of-mine salt and bulkheads



Steel Bulkhead

Recovery Cost

WIPP recovery costs for resumption of operations are estimated to be approximately \$242 million

- Major cost drivers include: facility program and safety documentation enhancements and revisions, mine habitability and operations, facility upgrades, waste emplacement operations, operational readiness assessments, and program management support.

In addition, two capital asset project line items are required:

- a new permanent ventilation system, with an estimated cost range of \$65 million–\$261 million
- supporting exhaust shaft, with an estimated cost range of \$12 million–\$48 million
- These line item cost estimates are preliminary, and will be refined as detailed planning is developed and as uncertainties are reduced

Costs are based on the planning to date and may change as new information is received or requirements change

WIPP Transportation Update

- WIPP training is still available when requested
 - Important that training needs are met and remain current
- Andrews, TX (April 3, 2014)
 - Multi-state, multi-jurisdictional response
 - First responders from Texas and New Mexico
- Ruston, LA (October 9, 2014)



Transportation Status

- Shipments are currently suspended
- Inter-site shipments may occur
 - Allow for better waste management and characterization
- NRC approved Revision 23 of the TRUPACT-II Safety Analysis Report
 - Allows for single containment
 - Continues to meet NRC Type B requirements
- Resume to support operations in accordance with WIPP recovery plan

Current information is available

<http://www.wipp.energy.gov>

1-800-336-9477

Follow us on Twitter: @WIPPNEWS