



U.S. DEPARTMENT OF
ENERGY

OFFICE OF
**ENVIRONMENTAL
MANAGEMENT**

WIPP National TRU Program

James Mason

Institutional Affairs Manager

Carlsbad Field Office

for

Southern States Energy Board

New Orleans, Louisiana

December 9-10, 2015

WIPP National TRU Program

Institutional Affairs
Transportation and Radiological Response
Support Programs

Public Law 102-579; Section 16, Transportation

Provides for program support and technical assistance to Tribes and States for prevention, preparedness and response for WIPP Transuranic Waste transportation activities.

- Support and assistance is limited to State Regional Groups, State and Tribes with jurisdictions servicing negotiated open transportation corridors.
- Most states are coordinated through regional State organizations;
 - Western Governors Association
 - Southern States Energy Board
 - Council of State Governments, Midwest
 - Council of State Governments, Northeast
- Five Tribal Nations and the State of New Mexico work under separate stand-alone agreements.

WIPP Transportation Corridors



WIPP Program Coordination

- Assist in providing personnel and material support to State Regional Groups, States and Tribes to coordinate WIPP related activities.

Training

- Provide training for response to WIPP related transportation activities.

Equipment

- Assistance in the purchase and maintenance of equipment needed for response to WIPP related transportation activities, within the scope of provided training.

Exercise

- Assistance in planning and the conduct of WIPP Transportation Exercises (WIPPTREX).

Public Outreach and Education

- Local exhibition of truck/TRUpact II containers , Public Education and Intergovernmental Affairs

TRAINING

Modular Emergency Response Radiological Transportation Training (MERRTT)

- First Responder training for transportation incidents involving radiological materials.
- Train-the-Trainer
- Compressed (Refresher) Training

CVSA Level VI Inspection Certification

- For the inspection of motor carriers transporting transuranic waste and Highway Route Controlled Quantities (HRCQ) shipments of radioactive materials.

Radiological Training for Hospital Personnel

- Patient Care for radiologically contaminated patients.

Medical Examiner/Coroner

- Handling of radiologically contaminated bodies, decontamination and documentation.

TRAINING

TRANSCOM Users/Operators

- Monitoring and tracking of WIPP shipments.

Emergency Communications 911 Dispatcher

- Handling of calls when radioactive materials are involved.

Public Information Officer (PIO)

- Public Information for incidents involving radiological materials.

WIPP Transportation Exercises (WIPPTREX)

- Assistance is provided to stakeholder organizations in the planning and conduct of WIPP Transportation Exercises in order to validate capabilities and proficiency of responding jurisdictions along WIPP transportation corridors.

Radiological Assistance Program (RAP) DOE/NNSA

- RAP provides resources (trained personnel and equipment) to evaluate, assess, advise, isotopically identify, search for, and assist in the mitigation of actual or perceived nuclear or radiological hazards.
- Along with teams from around the nation, WIPP's RAP team is capable of providing assistance in all types of facility or transportation incidents involving radiation or radioactive material.

Incident/Accident Response Team (IART) DOE/CBFO

- The IART provides technical guidance for package recovery in a transportation emergency.



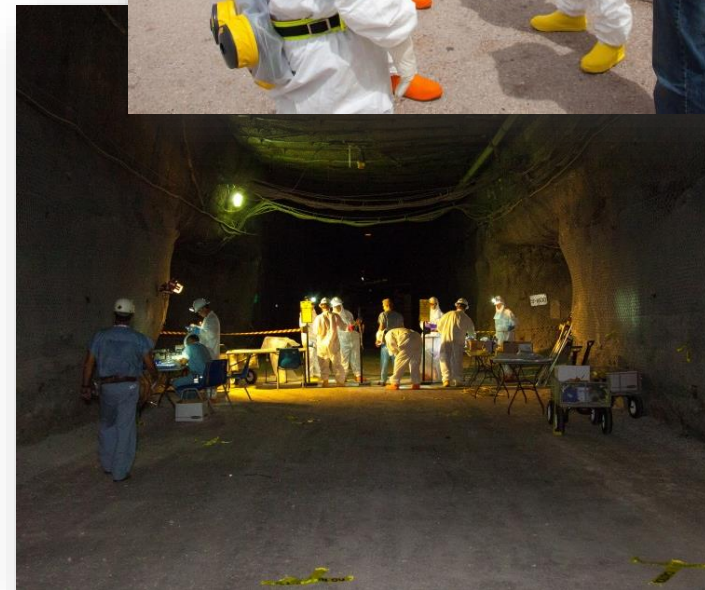
U.S. DEPARTMENT OF
ENERGY

OFFICE OF
**ENVIRONMENTAL
MANAGEMENT**

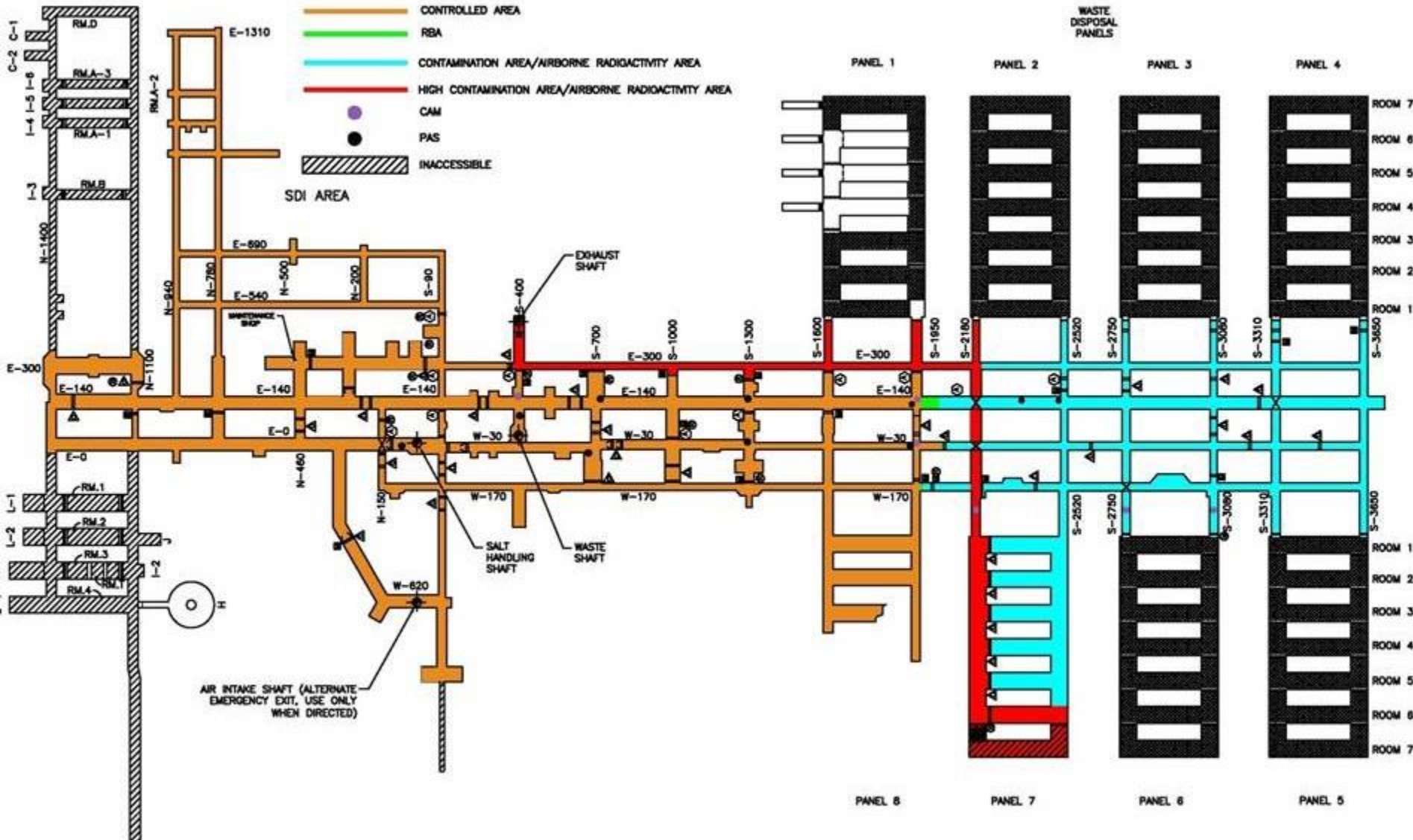
Resuming Operations at WIPP

Key Steps to Recovery

- Documented Safety Analysis Revisions
- Safety Management Program Revitalization
- Underground Restoration
 - Re-Establish Degraded Equipment
 - Fire Protection
 - Maintenance and Ground Control
 - Radiological Risk Mitigation
 - Soot cleaning of electrical panels
- Expedited mine stability
- Initial Panel 6 and Panel 7, Room 7 Closure
- Interim Ventilation
- Supplemental Ventilation Modifications



Radiological Rollback



Area of Significant Progress

- Ground control – 85% of catch-up bolting completed
- Radiological risk reduction – water wash/floor cover – over 65% of U/G released as controlled area
- Electrical restoration – soot cleaning - 98% complete
- Zone recovery – 98% complete
- Initial panel closure for Panel 6 and Panel 7 Room – isolation of nitrate salt bearing waste - complete
- New DSA – supports enhanced Safety Management Programs – in progress



Area of Significant Progress

- Repairs on Interim Ventilation System (IVS) – complete
- Procurement and installation of Supplemental Ventilation System (SVS) – near completion
- Procurement of new equipment – including hybrid bolter
- New Integrated Performance Measurement Baseline – in progress



AIB Reports and Corrective Action Plans

- CBFO/NWP Corrective Action Plans (CAPs) for judgments of need (JON) from Accident Investigation Board (AIB) reports on the haul truck fire and Phase I radiological event were approved in February of 2015 – now in implementation
- AIB Report for the Radiological Release Event, Phase II, issued April 2015. Phase II focused on determining the direct cause of the radiological release. CBFO and NWP Phase II CAPs were approved in early September – now in implementation

TRU Waste Generator Impacts

Prioritization of Shipments:

- It is premature at this stage of the recovery to predict and allocate the rate of TRU waste shipments to WIPP.
- Initial focus will be on emplacement of wastes generated during recovery activities and emplacement of wastes currently stored in the WIPP surface facilities (these wastes were received but not emplaced prior to the events).
- The timing for resumption of shipments from offsite currently is uncertain and will be based on a variety of factors.

TRU Waste Generator Impacts

- In determining the rate of shipments among sites, DOE will consider numerous technical and programmatic factors
 - WIPP transportation and waste acceptance capabilities
 - Generator site compliance commitments
 - Storage capacities
 - Other site specific technical or safety issues
- Construction of additional surface storage at WIPP is one option being considered



- Develop new PMB based on current schedule/cost impacts – fall 2015
- Complete installation and testing of interim and supplemental ventilation – early 2016
- Complete Operational Readiness Reviews
- Resume waste emplacement



Questions & Answers

