



Savannah River Site Transuranic Waste Program Update

John C. Gilmour

Director, Solid Waste Management
Savannah River Nuclear Solutions
December 1, 2010

Southern States Energy Board Joint Meeting
Radioactive Materials Transportation Committee and
TRU Waste Transportation Working Group

New Orleans, LA

Overview

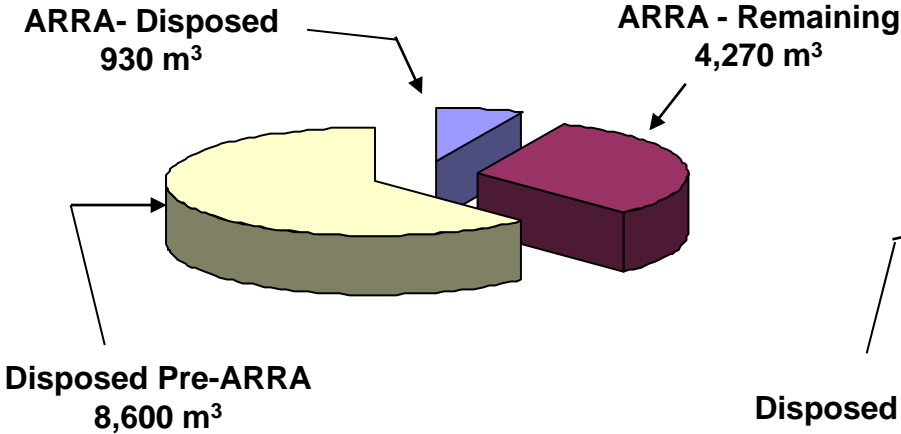
- Waste Isolation Pilot Plant (WIPP) Shipments
- Savannah River Site (SRS) Transuranic (TRU) Waste Inventory
- Current TRU Waste Program Status
- Projected WIPP Shipments for FY11-FY13

SRS to WIPP Shipments

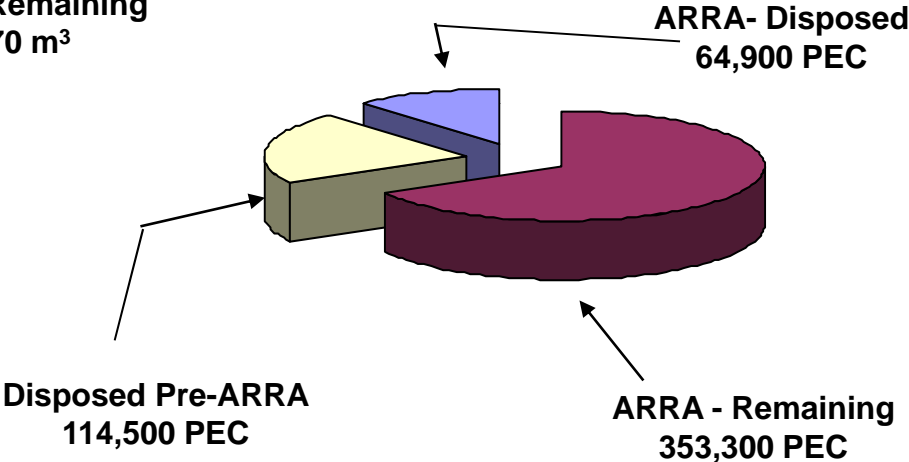
- **FY 2010**
 - Made 83 CH-TRU shipments
 - Averaged 1.8 shipments /week
- **FY2011 (October)**
 - Made 7 CH-TRU shipments
 - Made 7 RH-TRU shipments
 - Averaged 3.5 shipments/week

Current SRS TRU Waste Inventory

Volume



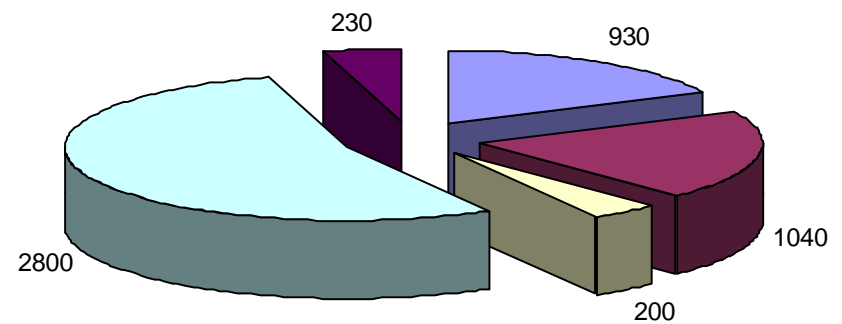
Activity



* As of 10/31/10

Current SRS TRU Waste Inventory (cont)

- ~5,200 m³ of legacy TRU waste at the start of ARRA
- 5,000 m³ of this waste committed to disposal
- 200 m³ has no established disposition path or needs processes that are not available at SRS



- Disposed
- In Characterization
- Difficult
- Boxed/Misc
- Drummed

As of 10/31/10

TRU Waste Program Status

Most of the remaining TRU waste cannot be shipped to WIPP until it is remediated and/or repackaged.

- Remediation – Removal or mitigation of items that do not meet the waste acceptance criteria for WIPP. These include unabsorbed liquids, aerosol cans, >4 liter sealed containers, and pressurized containers.
- Repackaging – Packing compliant waste into an approved WIPP shipping container. The only approved containers are 30 and 55 gallon drums, standard waste boxes (SWB), and standard large boxes (SLB).

Drum Remediation

- Over 90% of the drums retrieved from TRU Pad 1 must be remediated prior to disposal at WIPP
- Remediation line installed in F-Canyon in a hardened facility with a safety credited ventilation system
- Drums are opened, the contents removed, and then compliantly repackaged
 - Liquids absorbed
 - Aerosol cans removed
 - Sealed containers opened or punctured
- Multiple drums may be created from one parent drum

TRU Pad 1



TRU Pad 1 (continued)



Drum Remediation – F Canyon



Box Repackaging / Remediation

- 2,800 m³ remains in various steel and concrete containers that will require remediation and repackaging.
- The size and number of boxes and miscellaneous containers vary:
 - 11 Large Steel Boxes (LSB)
 - 89 Misc Steel Boxes (MSB)
 - 230 Standard Large Boxes (SLB)
 - 417 Standard Waste Boxes (SWB)

Box Repackaging / Remediation (continued)

- Larger boxes are transported to H-Canyon where they are opened and the contents removed, remediated, and repackaged into either SWBs or SLBs
- These SWBs and SLBs are then screened, and if necessary, sent to the F-Canyon Box Remediation enclosure for processing
 - Majority of prohibited items are segregated out in H-Canyon. 60% of the repackaged containers are expected to pass and require no further remediation

Box Repackaging / Remediation (continued)

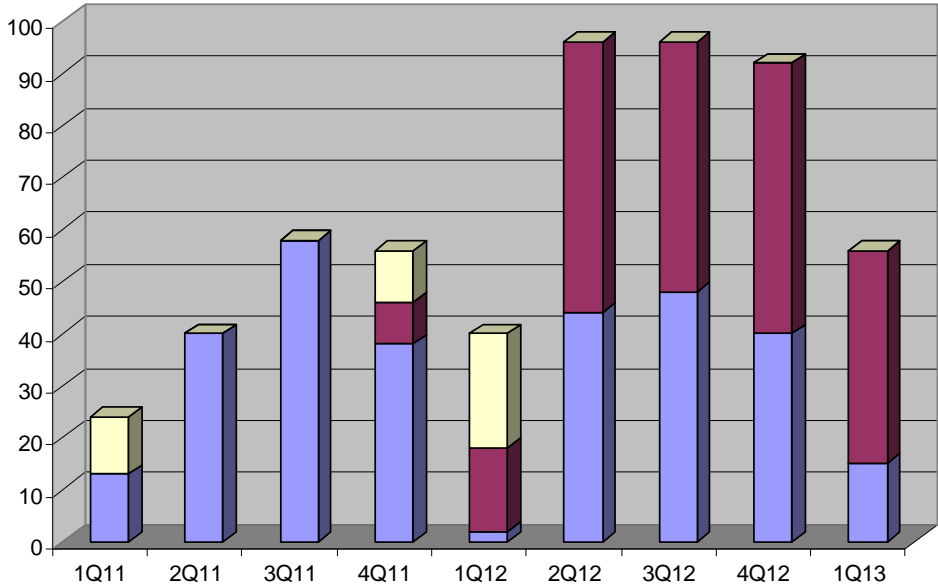


WIPP Shipments

- Will continue to ship CH drums and SWBs in TRUPACT II containers
- Will continue to ship RH drums in 72-B containers
- SRS will be the first Site to use the new TRUPACT III containers to ship the larger SLB2 waste containers



Projected Shipments to WIPP, FY11-FY13



	TRUPACT II	TRUPACT III	72-B
1Q11	13	0	11
2Q11	40	0	0
3Q11	58	0	0
4Q11	38	8	10
1Q12	2	16	22
2Q12	44	52	0
3Q12	48	48	0
4Q12	40	52	0
1Q13	15	41	0
Total	298	217	43

Summary

- SRS will be first to ship in TRUPACT III shipping container.
- SRS will be shipping 5 to 7 shipments a week to WIPP through December of 2012.
- The goal of SRS is to be the next DOE large quantity site to complete disposal of all TRU legacy waste.